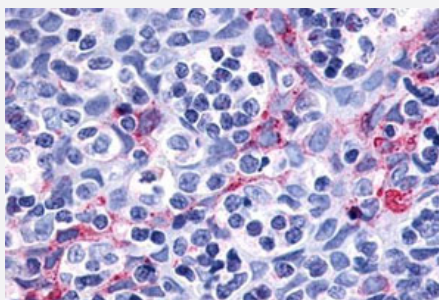


P2RY11 polyclonal antibody

Catalog # PAB26407

Size 50 ug

Applications



Immunohistochemistry (Formalin/PFA-fixed paraffin-embedded sections)

Immunohistochemical (Formalin/PFA-fixed paraffin-embedded sections) staining in human dendritic cells with P2RY11 polyclonal antibody (Cat # PAB26407). Immunohistochemistry of formalin-fixed, paraffin-embedded tissue after heat-induced antigen retrieval.

Specification

Product Description	Rabbit polyclonal antibody raised against synthetic peptide of P2RY11.
Immunogen	A synthetic peptide corresponding to 17 amino acids at 3rd cytoplasmic domain of human P2RY11.
Host	Rabbit
Reactivity	Horse, Human
Specificity	BLAST analysis of the peptide immunogen showed no homology with other human proteins.
Form	Liquid
Purification	Immunoaffinity chromatography
Recommend Usage	Immunohistochemistry (Formalin/PFA-fixed paraffin-embedded sections) (8 ug/mL) The optimal working dilution should be determined by the end user.
Storage Buffer	In PBS (0.09% sodium azide)
Storage Instruction	Store at 4°C. For long term storage store at -80°C. Aliquot to avoid repeated freezing and thawing.

Note

This product contains sodium azide: a POISONOUS AND HAZARDOUS SUBSTANCE which should be handled by trained staff only.

Applications

- Immunohistochemistry (Formalin/PFA-fixed paraffin-embedded sections)

Immunohistochemical (Formalin/PFA-fixed paraffin-embedded sections) staining in human dendritic cells with P2RY11 polyclonal antibody (Cat # PAB26407). Immunohistochemistry of formalin-fixed, paraffin-embedded tissue after heat-induced antigen retrieval.

- Enzyme-linked Immunoabsorbent Assay

Gene Info — P2RY11

Entrez GeneID [5032](#)

Protein Accession# [Q96G91](#)

Gene Name P2RY11

Gene Alias P2Y11

Gene Description purinergic receptor P2Y, G-protein coupled, 11

Omim ID [602697](#)

Gene Ontology [Hyperlink](#)

Gene Summary The product of this gene belongs to the family of G-protein coupled receptors. This family has several receptor subtypes with different pharmacological selectivity, which overlaps in some cases, for various adenosine and uridine nucleotides. This receptor is coupled to the stimulation of the phosphoinositide and adenylyl cyclase pathways and behaves as a selective purinoceptor. Naturally occurring read-through transcripts, resulting from intergenic splicing between this gene and an immediately upstream gene (PPAN, encoding pater pan homolog), have been found. The PPAN-P2RY11 read-through mRNA is ubiquitously expressed and encodes a fusion protein that shares identity with each individual gene product. [provided by RefSeq]

Other Designations P2Y purinoceptor 11|P2Y11 receptor|purinergic receptor P2Y11

Pathway

- [Neuroactive ligand-receptor interaction](#)

Disease

- [Myocardial Infarction](#)