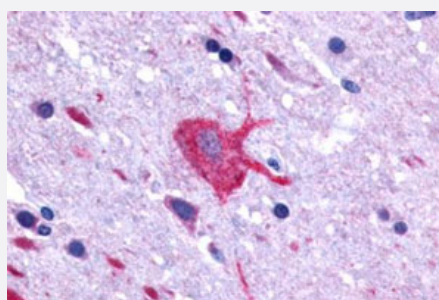


LGR4 polyclonal antibody

Catalog # PAB26401

Size 50 ug

Applications



Immunohistochemistry (Formalin/PFA-fixed paraffin-embedded sections)

Immunohistochemical (Formalin/PFA-fixed paraffin-embedded sections) staining in human brain, neurons and glia with LGR4 polyclonal antibody (Cat # PAB26401). Immunohistochemistry of formalin-fixed, paraffin-embedded tissue after heat-induced antigen retrieval.

Specification

Product Description	Rabbit polyclonal antibody raised against synthetic peptide of LGR4.
Immunogen	A synthetic peptide corresponding to 18 amino acids at C-terminus of human LGR4.
Host	Rabbit
Reactivity	Bovine, Dog, Horse, Human, Monkey, Pig, Rabbit
Specificity	BLAST analysis of the peptide immunogen showed no homology with other human proteins.
Form	Liquid
Purification	Immunoaffinity chromatography
Recommend Usage	Immunohistochemistry (Formalin/PFA-fixed paraffin-embedded sections) (7-12 ug/mL) The optimal working dilution should be determined by the end user.
Storage Buffer	In PBS (0.09% sodium azide)
Storage Instruction	Store at 4°C. For long term storage store at -80°C. Aliquot to avoid repeated freezing and thawing.

Note

This product contains sodium azide: a POISONOUS AND HAZARDOUS SUBSTANCE which should be handled by trained staff only.

Applications

- Immunohistochemistry (Formalin/PFA-fixed paraffin-embedded sections)

Immunohistochemical (Formalin/PFA-fixed paraffin-embedded sections) staining in human brain, neurons and glia with LGR4 polyclonal antibody (Cat # PAB26401). Immunohistochemistry of formalin-fixed, paraffin-embedded tissue after heat-induced antigen retrieval.

Gene Info — LGR4

Entrez GeneID	55366
---------------	-----------------------

Protein Accession#	Q9BXB1
--------------------	------------------------

Gene Name	LGR4
-----------	------

Gene Alias	GPR48
------------	-------

Gene Description	leucine-rich repeat-containing G protein-coupled receptor 4
------------------	---

Omim ID	606666
---------	------------------------

Gene Ontology	Hyperlink
---------------	---------------------------

Gene Summary	G protein-coupled receptors (GPCRs) play key roles in a variety of physiologic functions. Members of the leucine-rich GPCR (LGR) family, such as GPR48, have multiple N-terminal leucine-rich repeats (LRRs) and a 7-transmembrane domain (Weng et al., 2008 [PubMed 18424556]).[supplied by OMIM]
--------------	--

Other Designations	G protein-coupled receptor 48 G-protein-coupled receptor 48
--------------------	---

Pathway

- [Neuroactive ligand-receptor interaction](#)