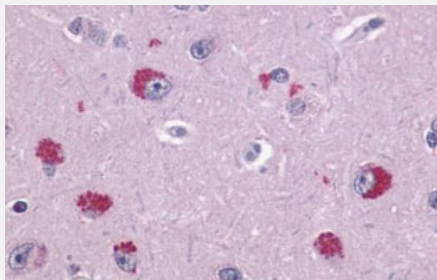


TAAR1 polyclonal antibody

Catalog # PAB26396

Size 50 ug

Applications



Immunohistochemistry (Formalin/PFA-fixed paraffin-embedded sections)

Immunohistochemical (Formalin/PFA-fixed paraffin-embedded sections) staining in human brain, neurons with TAAR1 polyclonal antibody (Cat # PAB26396). Immunohistochemistry of formalin-fixed, paraffin-embedded tissue after heat-induced antigen retrieval.

Specification

Product Description	Rabbit polyclonal antibody raised against synthetic peptide of TAAR1.
Immunogen	A synthetic peptide corresponding to 17 amino acid peptide from 2nd extracellular domain of human TAAR1.
Host	Rabbit
Reactivity	Human, Rat
Specificity	BLAST analysis of the peptide immunogen showed no homology with other human proteins.
Form	Liquid
Purification	Immunoaffinity chromatography
Recommend Usage	Immunohistochemistry (Formalin/PFA-fixed paraffin-embedded sections) (6-15 ug/mL) The optimal working dilution should be determined by the end user.
Storage Buffer	In PBS (0.09% sodium azide)
Storage Instruction	Store at 4°C. For long term storage store at -80°C. Aliquot to avoid repeated freezing and thawing.

Note

This product contains sodium azide: a POISONOUS AND HAZARDOUS SUBSTANCE which should be handled by trained staff only.

Applications

- Western Blot
- Immunohistochemistry (Formalin/PFA-fixed paraffin-embedded sections)

Immunohistochemical (Formalin/PFA-fixed paraffin-embedded sections) staining in human brain, neurons with TAAR1 polyclonal antibody (Cat # PAB26396). Immunohistochemistry of formalin-fixed, paraffin-embedded tissue after heat-induced antigen retrieval.

Gene Info — TAAR1

Entrez GeneID	134864
Protein Accession#	Q96RJ0
Gene Name	TAAR1
Gene Alias	MGC126874, MGC138399, RP11-295F4.9, TA1, TAR1, TRAR1
Gene Description	trace amine associated receptor 1
Omim ID	609333
Gene Ontology	Hyperlink
Gene Summary	TAAR1 is a G protein-coupled receptor activated by trace amines. Trace amines are endogenous amine compounds that account for less than 1% of the biogenic amines in most brain regions (Bunzow et al., 2001 [PubMed 11723224]).[supplied by OMIM]
Other Designations	OTTHUMP00000017224 trace amine receptor 1

Pathway

- [Neuroactive ligand-receptor interaction](#)