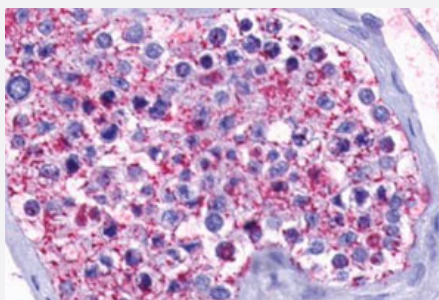


OPN5 polyclonal antibody

Catalog # PAB26392

Size 50 ug

Applications



Immunohistochemistry (Formalin/PFA-fixed paraffin-embedded sections)

Immunohistochemical (Formalin/PFA-fixed paraffin-embedded sections) staining in human testis with OPN5 polyclonal antibody (Cat # PAB26392). Immunohistochemistry of formalin-fixed, paraffin-embedded tissue after heat-induced antigen retrieval.

Specification

Product Description	Rabbit polyclonal antibody raised against synthetic peptide of OPN5.
Immunogen	A synthetic peptide corresponding to 17 amino acids at 7th transmembrane domain of human OPN5.
Host	Rabbit
Reactivity	Bovine, Dog, Horse, Human, Monkey, Mouse, Rabbit
Specificity	BLAST analysis of the peptide immunogen showed no homology with other human proteins.
Form	Liquid
Purification	Immunoaffinity chromatography
Recommend Usage	Immunohistochemistry (Formalin/PFA-fixed paraffin-embedded sections) (30 ug/mL) The optimal working dilution should be determined by the end user.
Storage Buffer	In PBS (0.09% sodium azide)
Storage Instruction	Store at 4°C. For long term storage store at -80°C. Aliquot to avoid repeated freezing and thawing.

Note

This product contains sodium azide: a POISONOUS AND HAZARDOUS SUBSTANCE which should be handled by trained staff only.

Applications

- Immunohistochemistry (Formalin/PFA-fixed paraffin-embedded sections)

Immunohistochemical (Formalin/PFA-fixed paraffin-embedded sections) staining in human testis with OPN5 polyclonal antibody (Cat # PAB26392). Immunohistochemistry of formalin-fixed, paraffin-embedded tissue after heat-induced antigen retrieval.

Gene Info — OPN5

Entrez GeneID [221391](#)

Protein Accession# [Q6U736](#)

Gene Name OPN5

Gene Alias NEUROPSIN, PGR12, TMEM13

Gene Description opsin 5

Omim ID [609042](#)

Gene Ontology [Hyperlink](#)

Gene Summary Opsins are members of the guanine nucleotide-binding protein (G protein)-coupled receptor superfamily. This opsin gene is expressed in the eye, brain, testes, and spinal cord. This gene belongs to the seven-exon subfamily of mammalian opsin genes that includes peropsin (RRH) and retinal G protein coupled receptor (RGR). Like these other seven-exon opsin genes, this gene may encode a protein with photoisomerase activity. Alternative splicing results in multiple transcript variants encoding different isoforms. [provided by RefSeq]

Other Designations OTTHUMP00000016565|OTTHUMP00000039910|transmembrane protein 13