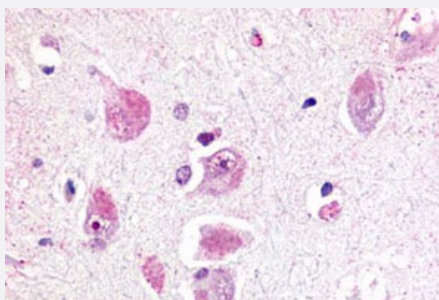


RXFP3 polyclonal antibody

Catalog # PAB26384

Size 50 ug

Applications



Immunohistochemistry (Formalin/PFA-fixed paraffin-embedded sections)

Immunohistochemical (Formalin/PFA-fixed paraffin-embedded sections) staining in human brain, neurons and glia with RXFP3 polyclonal antibody (Cat # PAB26384). Immunohistochemistry of formalin-fixed, paraffin-embedded tissue after heat-induced antigen retrieval.

Specification

| | |
|----------------------------|--|
| Product Description | Rabbit polyclonal antibody raised against synthetic peptide of RXFP3. |
| Immunogen | A synthetic peptide corresponding to 20 amino acids at 2nd cytoplasmic domain of human RXFP3. |
| Host | Rabbit |
| Reactivity | Hamster, Human, Rat |
| Specificity | BLAST analysis of the peptide immunogen showed no homology with other human proteins, except VGLL4 (45%). |
| Form | Liquid |
| Purification | Immunoaffinity chromatography |
| Recommend Usage | Immunohistochemistry (Formalin/PFA-fixed paraffin-embedded sections) (14-28 ug/mL) The optimal working dilution should be determined by the end user. |
| Storage Buffer | In PBS (0.09% sodium azide) |
| Storage Instruction | Store at 4°C. For long term storage store at -80°C. Aliquot to avoid repeated freezing and thawing. |

Note

This product contains sodium azide: a POISONOUS AND HAZARDOUS SUBSTANCE which should be handled by trained staff only.

Applications

- Immunohistochemistry (Formalin/PFA-fixed paraffin-embedded sections)

Immunohistochemical (Formalin/PFA-fixed paraffin-embedded sections) staining in human brain, neurons and glia with RXFP3 polyclonal antibody (Cat # PAB26384). Immunohistochemistry of formalin-fixed, paraffin-embedded tissue after heat-induced antigen retrieval.

Gene Info — RXFP3

| | |
|--------------------|--|
| Entrez GeneID | 51289 |
| Protein Accession# | Q9NSD7 |
| Gene Name | RXFP3 |
| Gene Alias | GPCR135, MGC141998, MGC142000, RLN3R1, RXFPR3, SALPR |
| Gene Description | relaxin/insulin-like family peptide receptor 3 |
| Omim ID | 609445 |
| Gene Ontology | Hyperlink |
| Other Designations | G-protein coupled receptor SALPR relaxin 3 receptor 1 relaxin family peptide receptor 3 somatostatin and angiotensin-like peptide receptor |