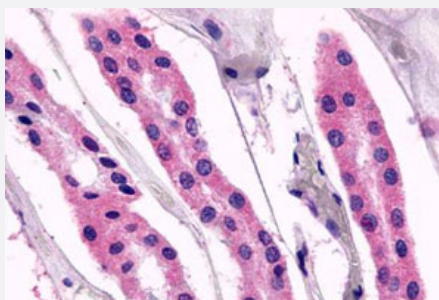


GPR98 polyclonal antibody

Catalog # PAB26383

Size 50 ug

Applications



Immunohistochemistry (Formalin/PFA-fixed paraffin-embedded sections)

Immunohistochemical (Formalin/PFA-fixed paraffin-embedded sections) staining in human kidney, renal tubules with GPR98 polyclonal antibody (Cat # PAB26383). Immunohistochemistry of formalin-fixed, paraffin-embedded tissue after heat-induced antigen retrieval.

Specification

Product Description	Rabbit polyclonal antibody raised against synthetic peptide of GPR98.
Immunogen	A synthetic peptide corresponding to 19 amino acids at N-terminal extracellular domain of human GPR98.
Host	Rabbit
Reactivity	Horse, Human
Specificity	BLAST analysis of the peptide immunogen showed no homology with other human proteins.
Form	Liquid
Purification	Immunoaffinity chromatography
Recommend Usage	Immunohistochemistry (Formalin/PFA-fixed paraffin-embedded sections) (10-26 ug/mL) The optimal working dilution should be determined by the end user.
Storage Buffer	In PBS (0.09% sodium azide)
Storage Instruction	Store at 4°C. For long term storage store at -80°C. Aliquot to avoid repeated freezing and thawing.

Note

This product contains sodium azide: a POISONOUS AND HAZARDOUS SUBSTANCE which should be handled by trained staff only.

Applications

- Western Blot
- Immunohistochemistry (Formalin/PFA-fixed paraffin-embedded sections)

Immunohistochemical (Formalin/PFA-fixed paraffin-embedded sections) staining in human kidney, renal tubules with GPR98 polyclonal antibody (Cat # PAB26383). Immunohistochemistry of formalin-fixed, paraffin-embedded tissue after heat-induced antigen retrieval.

Gene Info — GPR98

Entrez GeneID	84059
Protein Accession#	Q8WXG9
Gene Name	GPR98
Gene Alias	DKFZp761P0710, FEB4, KIAA0686, MASS1, USH2B, USH2C, VLGR1, VLGR1b
Gene Description	G protein-coupled receptor 98
Omim ID	602851 604352 605472
Gene Ontology	Hyperlink
Gene Summary	This gene encodes a member of the G-protein coupled receptor superfamily. The encoded protein contains a 7-transmembrane receptor domain, binds calcium and is expressed in the central nervous system. Mutations in this gene are associated with Usher syndrome 2 and familial febrile seizures. Several alternatively spliced transcripts have been described. [provided by RefSeq]
Other Designations	monogenic, audiogenic seizure susceptibility 1 homolog very large G protein-coupled receptor 1

Disease

- [Cardiovascular Diseases](#)
- [Diabetes Mellitus](#)
- [Edema](#)

- [Genetic Predisposition to Disease](#)
- [Retinal Diseases](#)
- [Thyroid Neoplasms](#)
- [Tobacco Use Disorder](#)
- [Usher Syndromes](#)