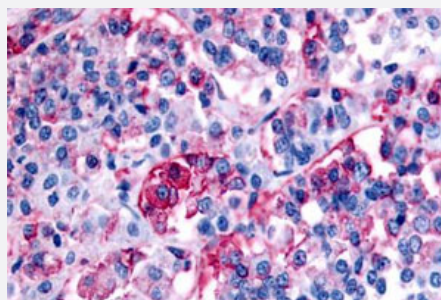


NPBWR1 polyclonal antibody

Catalog # PAB26380

Size 50 ug

Applications



Immunohistochemistry (Formalin/PFA-fixed paraffin-embedded sections)

Immunohistochemical (Formalin/PFA-fixed paraffin-embedded sections) staining in human brain, pituitary with NPBWR1 polyclonal antibody (Cat # PAB26380). Immunohistochemistry of formalin-fixed, paraffin-embedded tissue after heat-induced antigen retrieval.

Specification

Product Description	Rabbit polyclonal antibody raised against synthetic peptide of NPBWR1.
Immunogen	A synthetic peptide corresponding to 17 amino acids at 2nd cytoplasmic domain of human NPBWR1.
Host	Rabbit
Reactivity	Human, Monkey
Specificity	BLAST analysis of the peptide immunogen showed no homology with other human proteins.
Form	Liquid
Purification	Immunoaffinity chromatography
Recommend Usage	Immunohistochemistry (Formalin/PFA-fixed paraffin-embedded sections) (11-22 ug/mL) The optimal working dilution should be determined by the end user.
Storage Buffer	In PBS (0.09% sodium azide)
Storage Instruction	Store at 4°C. For long term storage store at -80°C. Aliquot to avoid repeated freezing and thawing.

Note

This product contains sodium azide: a POISONOUS AND HAZARDOUS SUBSTANCE which should be handled by trained staff only.

Applications

- Immunohistochemistry (Formalin/PFA-fixed paraffin-embedded sections)

Immunohistochemical (Formalin/PFA-fixed paraffin-embedded sections) staining in human brain, pituitary with NPBWR1 polyclonal antibody (Cat # PAB26380). Immunohistochemistry of formalin-fixed, paraffin-embedded tissue after heat-induced antigen retrieval.

Gene Info — NPBWR1

Entrez GeneID	2831
Protein Accession#	P48145
Gene Name	NPBWR1
Gene Alias	GPR7, MGC129755
Gene Description	neuropeptides B/W receptor 1
Omim ID	600730
Gene Ontology	Hyperlink
Other Designations	G protein-coupled receptor 7 neuropeptides B/W receptor type 1 opioid-somatostatin-like receptor 7

Pathway

- [Neuroactive ligand-receptor interaction](#)