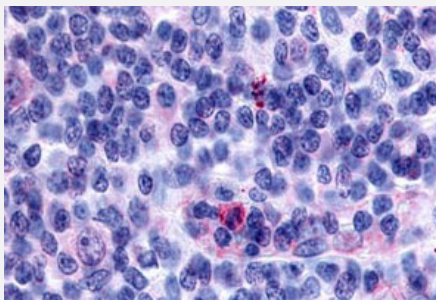


GPR65 polyclonal antibody

Catalog # PAB26378

Size 50 ug

Applications



Immunohistochemistry (Formalin/PFA-fixed paraffin-embedded sections)

Immunohistochemical (Formalin/PFA-fixed paraffin-embedded sections) staining in human lymph node, Hodgkin's disease with GPR65 polyclonal antibody (Cat # PAB26378). Immunohistochemistry of formalin-fixed, paraffin-embedded tissue after heat-induced antigen retrieval.

Specification

Product Description	Rabbit polyclonal antibody raised against synthetic peptide of GPR65.
Immunogen	A synthetic peptide corresponding to 19 amino acids at 3rd cytoplasmic domain of human GPR65.
Host	Rabbit
Reactivity	Human
Specificity	BLAST analysis of the peptide immunogen showed no homology with other human proteins.
Form	Liquid
Purification	Immunoaffinity chromatography
Recommend Usage	Immunohistochemistry (Formalin/PFA-fixed paraffin-embedded sections) (9-23 ug/mL) The optimal working dilution should be determined by the end user.
Storage Buffer	In PBS (0.09% sodium azide)
Storage Instruction	Store at 4°C. For long term storage store at -80°C. Aliquot to avoid repeated freezing and thawing.

Note

This product contains sodium azide: a POISONOUS AND HAZARDOUS SUBSTANCE which should be handled by trained staff only.

Applications

- Immunohistochemistry (Formalin/PFA-fixed paraffin-embedded sections)

Immunohistochemical (Formalin/PFA-fixed paraffin-embedded sections) staining in human lymph node, Hodgkin's disease with GPR65 polyclonal antibody (Cat # PAB26378). Immunohistochemistry of formalin-fixed, paraffin-embedded tissue after heat-induced antigen retrieval.

Gene Info — GPR65

Entrez GeneID	8477
Protein Accession#	Q8ML9
Gene Name	GPR65
Gene Alias	TDAG8, hTDAG8
Gene Description	G protein-coupled receptor 65
Omim ID	604620
Gene Ontology	Hyperlink
Other Designations	T-cell death-associated gene 8