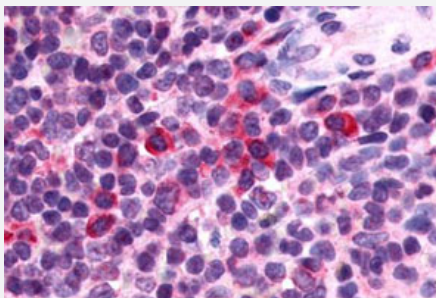


P2RY13 polyclonal antibody

Catalog # PAB26376

Size 50 ug

Applications



Immunohistochemistry (Formalin/PFA-fixed paraffin-embedded sections)

Immunohistochemical (Formalin/PFA-fixed paraffin-embedded sections) staining in human spleen with P2RY13 polyclonal antibody (Cat # PAB26376). Immunohistochemistry of formalin-fixed, paraffin-embedded tissue after heat-induced antigen retrieval.

Specification

Product Description	Rabbit polyclonal antibody raised against synthetic peptide of P2RY13.
Immunogen	A synthetic peptide corresponding to 16 amino acids at 3rd cytoplasmic domain of human P2RY13.
Host	Rabbit
Reactivity	Human
Specificity	BLAST analysis of the peptide immunogen showed no homology with other human proteins, except PRPF4B (50%).
Form	Liquid
Purification	Immunoaffinity chromatography
Recommend Usage	Immunohistochemistry (Formalin/PFA-fixed paraffin-embedded sections) (20-40 ug/mL) The optimal working dilution should be determined by the end user.
Storage Buffer	In PBS (0.09% sodium azide)
Storage Instruction	Store at 4°C. For long term storage store at -80°C. Aliquot to avoid repeated freezing and thawing.

Note

This product contains sodium azide: a POISONOUS AND HAZARDOUS SUBSTANCE which should be handled by trained staff only.

Applications

- Immunohistochemistry (Formalin/PFA-fixed paraffin-embedded sections)

Immunohistochemical (Formalin/PFA-fixed paraffin-embedded sections) staining in human spleen with P2RY13 polyclonal antibody (Cat # PAB26376). Immunohistochemistry of formalin-fixed, paraffin-embedded tissue after heat-induced antigen retrieval.

Gene Info — P2RY13

Entrez GeneID [53829](#)

Protein Accession# [Q9BPV8](#)

Gene Name P2RY13

Gene Alias FKSG77, GPCR1, GPR86, GPR94, P2Y13, SP174

Gene Description purinergic receptor P2Y, G-protein coupled, 13

Omim ID [606380](#)

Gene Ontology [Hyperlink](#)

Gene Summary The product of this gene belongs to the family of G-protein coupled receptors. This family has several receptor subtypes with different pharmacological selectivity, which overlaps in some cases, for various adenosine and uridine nucleotides. This receptor is activated by ADP. [provided by RefSeq]

Other Designations G protein-coupled receptor 86|G-protein coupled receptor 94|P2Y purinoceptor 13

Pathway

- [Neuroactive ligand-receptor interaction](#)

Disease

- [Cardiovascular Diseases](#)

- [Diabetes Mellitus](#)
- [Edema](#)