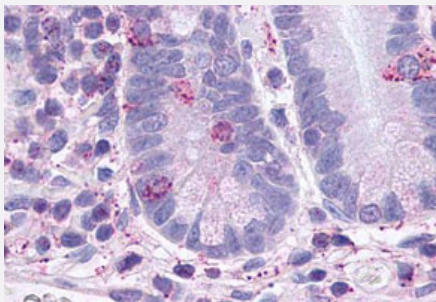


GLP2R polyclonal antibody

Catalog # PAB26373

Size 50 ug

Applications



Immunohistochemistry (Formalin/PFA-fixed paraffin-embedded sections)

Immunohistochemistry (Formalin/PFA-fixed paraffin-embedded sections) of human small intestine, intraepithelial neuroendocrine cells and enterocytes with GLP2R polyclonal antibody (Cat # PAB26373). Immunohistochemistry of formalin-fixed, paraffin-embedded tissue after heat-induced antigen retrieval.

Specification

Product Description	Rabbit polyclonal antibody raised against synthetic peptide of GLP2R.
Immunogen	A synthetic peptide corresponding to 16 amino acids at C-terminus of human GLP2R.
Host	Rabbit
Reactivity	Human
Specificity	BLAST analysis of the peptide immunogen showed no homology with other human proteins.
Form	Liquid
Purification	Immunoaffinity chromatography
Recommend Usage	Immunohistochemistry (Formalin/PFA-fixed paraffin-embedded sections) (10 ug/mL) The optimal working dilution should be determined by the end user.
Storage Buffer	In PBS (0.09% sodium azide)
Storage Instruction	Store at 4°C. For long term storage store at -80°C. Aliquot to avoid repeated freezing and thawing.

Note

This product contains sodium azide: a POISONOUS AND HAZARDOUS SUBSTANCE which should be handled by trained staff only.

Applications

- Immunohistochemistry (Formalin/PFA-fixed paraffin-embedded sections)

Immunohistochemistry (Formalin/PFA-fixed paraffin-embedded sections) of human small Intestine, intraepithelial neuroendocrine cells and enterocytes with GLP2R polyclonal antibody (Cat # PAB26373). Immunohistochemistry of formalin-fixed, paraffin-embedded tissue after heat-induced antigen retrieval.

Gene Info — GLP2R

Entrez GeneID	9340
---------------	----------------------

Protein Accession#	O95838
--------------------	------------------------

Gene Name	GLP2R
-----------	-------

Gene Alias	-
------------	---

Gene Description	glucagon-like peptide 2 receptor
------------------	----------------------------------

Omim ID	603659
---------	------------------------

Gene Ontology	Hyperlink
---------------	---------------------------

Gene Summary	The GLP2 receptor (GLP2R) is a G protein-coupled receptor superfamily member closely related to the glucagon receptor and GLP1 receptor. Glucagon-like peptide-2 (GLP2) is a 33-amino acid proglucagon-derived peptide produced by intestinal enteroendocrine cells. Like glucagon-like peptide-1 (GLP1) and glucagon itself, it is derived from the proglucagon peptide encoded by the GCG gene. GLP2 stimulates intestinal growth and upregulates villus height in the small intestine, concomitant with increased crypt cell proliferation and decreased enterocyte apoptosis. Moreover, GLP2 prevents intestinal hypoplasia resulting from total parenteral nutrition. GLP2R, a G protein-coupled receptor superfamily member is expressed in the gut and closely related to the glucagon receptor (GCGR) and the receptor for GLP1 (GLP1R). [provided by RefSeq]
--------------	---

Other Designations	OTTHUMP00000160769
--------------------	--------------------

Pathway

- [Neuroactive ligand-receptor interaction](#)

Disease

- [Anorexia Nervosa](#)
- [Bulimia](#)
- [Cardiovascular Diseases](#)
- [Colitis](#)
- [Diabetes Mellitus](#)
- [Edema](#)
- [Genetic Predisposition to Disease](#)
- [Tobacco Use Disorder](#)