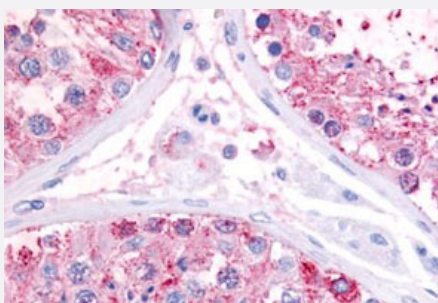


GPR22 polyclonal antibody

Catalog # PAB26369

Size 50 ug

Applications



Immunohistochemistry (Formalin/PFA-fixed paraffin-embedded sections)

Immunohistochemistry (Formalin/PFA-fixed paraffin-embedded sections) of human testis tissue with GPR22 polyclonal antibody (Cat # PAB26369). Immunohistochemistry of formalin-fixed, paraffin-embedded tissue after heat-induced antigen retrieval.

Specification

Product Description	Rabbit polyclonal antibody raised against synthetic peptide of GPR22.
Immunogen	A synthetic peptide corresponding to 15 amino acids at 3rd cytoplasmic domain of human GPR22.
Host	Rabbit
Reactivity	Human, Monkey
Specificity	BLAST analysis of the peptide immunogen showed no homology with other human proteins.
Form	Liquid
Purification	Immunoaffinity chromatography
Recommend Usage	Immunohistochemistry (Formalin/PFA-fixed paraffin-embedded sections) (20 ug/mL) The optimal working dilution should be determined by the end user.
Storage Buffer	In PBS (0.09% sodium azide)
Storage Instruction	Store at 4°C. For long term storage store at -80°C. Aliquot to avoid repeated freezing and thawing.

Note

This product contains sodium azide: a POISONOUS AND HAZARDOUS SUBSTANCE which should be handled by trained staff only.

Applications

- Immunohistochemistry (Formalin/PFA-fixed paraffin-embedded sections)

Immunohistochemistry (Formalin/PFA-fixed paraffin-embedded sections) of human testis tissue with GPR22 polyclonal antibody (Cat # PAB26369). Immunohistochemistry of formalin-fixed, paraffin-embedded tissue after heat-induced antigen retrieval.

Gene Info — GPR22

Entrez GeneID	2845
Protein Accession#	Q99680
Gene Name	GPR22
Gene Alias	MGC129847
Gene Description	G protein-coupled receptor 22
Omim ID	601910
Gene Ontology	Hyperlink
Gene Summary	This gene is a member of the G-protein coupled receptor 1 family and encodes a multi-pass membrane protein. [provided by RefSeq]
Other Designations	-

Disease

- [Genetic Predisposition to Disease](#)
- [Osteoarthritis](#)