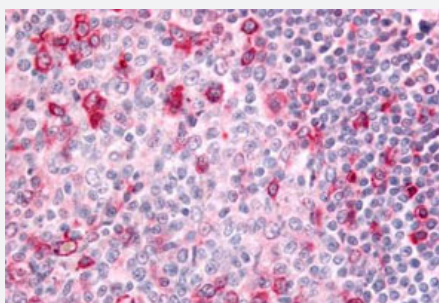


GPR183 polyclonal antibody

Catalog # PAB26365

Size 50 ug

Applications



Immunohistochemistry (Formalin/PFA-fixed paraffin-embedded sections)

Immunohistochemistry (Formalin/PFA-fixed paraffin-embedded sections) of human tonsil tissue with GPR183 polyclonal antibody (Cat # PAB26365). Immunohistochemistry of formalin-fixed, paraffin-embedded tissue after heat-induced antigen retrieval.

Specification

Product Description	Rabbit polyclonal antibody raised against synthetic peptide of GPR183.
Immunogen	A synthetic peptide corresponding to 15 amino acids at C-terminus of human GPR183.
Host	Rabbit
Reactivity	Human
Specificity	BLAST analysis of the peptide immunogen showed no homology with other human proteins.
Form	Liquid
Purification	Immunoaffinity chromatography
Recommend Usage	Immunohistochemistry (Formalin/PFA-fixed paraffin-embedded sections) (10 ug/mL) The optimal working dilution should be determined by the end user.
Storage Buffer	In PBS (0.09% sodium azide)
Storage Instruction	Store at 4°C. For long term storage store at -80°C. Aliquot to avoid repeated freezing and thawing.

Note

This product contains sodium azide: a POISONOUS AND HAZARDOUS SUBSTANCE which should be handled by trained staff only.

Applications

- Immunohistochemistry (Formalin/PFA-fixed paraffin-embedded sections)

Immunohistochemistry (Formalin/PFA-fixed paraffin-embedded sections) of human tonsil tissue with GPR183 polyclonal antibody (Cat # PAB26365). Immunohistochemistry of formalin-fixed, paraffin-embedded tissue after heat-induced antigen retrieval.

Gene Info — GPR183

Entrez GeneID [1880](#)

Protein Accession# [P32249](#)

Gene Name GPR183

Gene Alias EBI2

Gene Description G protein-coupled receptor 183

Omim ID [605741](#)

Gene Ontology [Hyperlink](#)

Gene Summary This gene was identified by the up-regulation of its expression upon Epstein-Barr virus infection of primary B lymphocytes. This gene is predicted to encode a G protein-coupled receptor that is most closely related to the thrombin receptor. Expression of this gene was detected in B-lymphocyte cell lines and lymphoid tissues but not in T-lymphocyte cell lines or peripheral blood T lymphocytes. The function of this gene is unknown. [provided by RefSeq]

Other Designations EBV-induced G protein-coupled receptor 2|Epstein-Barr virus induced gene 2 (lymphocyte-specific G protein-coupled receptor)|OTTHUMP00000018611