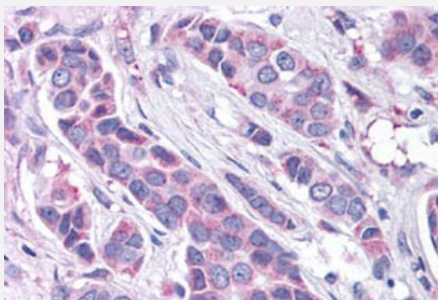


# GPER polyclonal antibody

Catalog # PAB26364

Size 50 ug

## Applications



### Immunohistochemistry (Formalin/PFA-fixed paraffin-embedded sections)

Immunohistochemistry (Formalin/PFA-fixed paraffin-embedded sections) of human breast cancer tissue with GPER polyclonal antibody (Cat # PAB26364). Immunohistochemistry of formalin-fixed, paraffin-embedded tissue after heat-induced antigen retrieval.

## Specification

<b>Product Description</b>	Rabbit polyclonal antibody raised against synthetic peptide of GPER.
<b>Immunogen</b>	A synthetic peptide corresponding to 16 amino acids at N-terminal extracellular domain of human GPER.
<b>Host</b>	Rabbit
<b>Reactivity</b>	Human
<b>Specificity</b>	BLAST analysis of the peptide immunogen showed no homology with other human proteins.
<b>Form</b>	Liquid
<b>Purification</b>	Immunoaffinity chromatography
<b>Recommend Usage</b>	Immunohistochemistry (Formalin/PFA-fixed paraffin-embedded sections) (20 ug/mL) The optimal working dilution should be determined by the end user.
<b>Storage Buffer</b>	In PBS (0.09% sodium azide)
<b>Storage Instruction</b>	Store at 4°C. For long term storage store at -80°C. Aliquot to avoid repeated freezing and thawing.

## Note

This product contains sodium azide: a POISONOUS AND HAZARDOUS SUBSTANCE which should be handled by trained staff only.

## Applications

- Western Blot
- Immunohistochemistry (Formalin/PFA-fixed paraffin-embedded sections)

Immunohistochemistry (Formalin/PFA-fixed paraffin-embedded sections) of human breast cancer tissue with GPER polyclonal antibody (Cat # PAB26364). Immunohistochemistry of formalin-fixed, paraffin-embedded tissue after heat-induced antigen retrieval.

- Immunofluorescence

## Gene Info — GPER

Entrez GeneID	<a href="#">2852</a>
Protein Accession#	<a href="#">Q99527</a>
Gene Name	GPER
Gene Alias	CEPR, CMKRL2, DRY12, FEG-1, GPCR-Br, GPR30, LERGU, LERGU2, LyGPR, MGC99678
Gene Description	G protein-coupled estrogen receptor 1
Omim ID	<a href="#">601805</a>
Gene Ontology	<a href="#">Hyperlink</a>
Gene Summary	This gene is a member of the G-protein coupled receptor 1 family and encodes a multi-pass membrane protein that localizes to the endoplasmic reticulum. The protein binds estrogen, resulting in intracellular calcium mobilization and synthesis of phosphatidylinositol 3,4,5-trisphosphate in the nucleus. This protein therefore plays a role in the rapid nongenomic signaling events widely observed following stimulation of cells and tissues with estrogen. Alternate transcriptional splice variants which encode the same protein have been characterized. [provided by RefSeq]
Other Designations	G protein-coupled receptor 30 IL8-related receptor OTTHUMP00000115502 chemokine receptor-like 2 constitutively expressed peptide-like receptor flow-induced endothelial G-protein coupled receptor heptahelix receptor leucine rich protein in GPR30 3'UTR

## Disease

- [Breast Neoplasms](#)
- [Head and Neck Neoplasms](#)
- [Neoplasm Recurrence](#)
- [Neoplasms](#)