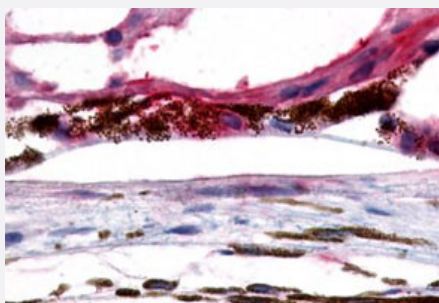


# GPR143 polyclonal antibody

Catalog # PAB26355

Size 50 ug

## Applications



### Immunohistochemistry (Formalin/PFA-fixed paraffin-embedded sections)

Immunohistochemistry (Formalin/PFA-fixed paraffin-embedded sections) of human eye, retina with GPR143 polyclonal antibody (Cat # PAB26355). Immunohistochemistry of formalin-fixed, paraffin-embedded tissue after heat-induced antigen retrieval.

## Specification

<b>Product Description</b>	Rabbit polyclonal antibody raised against synthetic peptide of GPR143.
<b>Immunogen</b>	A synthetic peptide corresponding to 16 amino acids at C-terminus of human GPR143.
<b>Host</b>	Rabbit
<b>Reactivity</b>	Human
<b>Specificity</b>	BLAST analysis of the peptide immunogen showed no homology with other human proteins.
<b>Form</b>	Liquid
<b>Purification</b>	Immunoaffinity chromatography
<b>Recommend Usage</b>	Immunohistochemistry (Formalin/PFA-fixed paraffin-embedded sections) (6-14 ug/mL) The optimal working dilution should be determined by the end user.
<b>Storage Buffer</b>	In PBS (0.09% sodium azide)
<b>Storage Instruction</b>	Store at 4°C. For long term storage store at -80°C. Aliquot to avoid repeated freezing and thawing.

**Note**

This product contains sodium azide: a POISONOUS AND HAZARDOUS SUBSTANCE which should be handled by trained staff only.

## Applications

- Immunohistochemistry (Formalin/PFA-fixed paraffin-embedded sections)

Immunohistochemistry (Formalin/PFA-fixed paraffin-embedded sections) of human eye, retina with GPR143 polyclonal antibody (Cat # PAB26355). Immunohistochemistry of formalin-fixed, paraffin-embedded tissue after heat-induced antigen retrieval.

## Gene Info — GPR143

**Entrez GeneID** [4935](#)

**Protein Accession#** [P51810](#)

**Gene Name** GPR143

**Gene Alias** OA1

**Gene Description** G protein-coupled receptor 143

**Omim ID** [300500](#)

**Gene Ontology** [Hyperlink](#)

**Gene Summary** Ocular albinism type 1 protein is a conserved integral membrane protein with seven transmembrane domains. It is expressed in the eye and epidermal melanocytes. [provided by RefSeq]

**Other Designations** OTTHUMP00000022884|ocular albinism 1 (Nettleship-Falls)|ocular albinism-1, Nettleship-Falls type