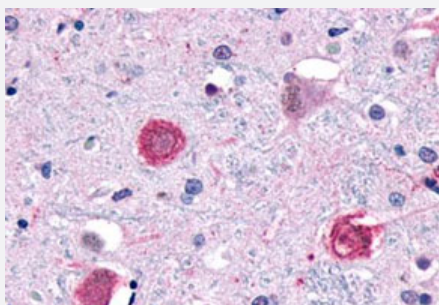


GPR1 polyclonal antibody

Catalog # PAB26333

Size 50 ug

Applications



Immunohistochemistry (Formalin/PFA-fixed paraffin-embedded sections)

Immunohistochemistry (Formalin/PFA-fixed paraffin-embedded sections) of human brain, neurons and glia with GPR1 polyclonal antibody (Cat # PAB26333). Immunohistochemistry of formalin-fixed, paraffin-embedded tissue after heat-induced antigen retrieval.

Specification

Product Description	Rabbit polyclonal antibody raised against synthetic peptide of GPR1.
Immunogen	A synthetic peptide corresponding to 17 amino acids at C-terminus of human GPR1.
Host	Rabbit
Reactivity	Human
Specificity	BLAST analysis of the peptide immunogen showed no homology with other human proteins.
Form	Liquid
Purification	Immunoaffinity chromatography
Recommend Usage	Immunohistochemistry (Formalin/PFA-fixed paraffin-embedded sections) (23-46 ug/mL) The optimal working dilution should be determined by the end user.
Storage Buffer	In PBS (0.09% sodium azide)
Storage Instruction	Store at 4°C. For long term storage store at -80°C. Aliquot to avoid repeated freezing and thawing.

Note

This product contains sodium azide: a POISONOUS AND HAZARDOUS SUBSTANCE which should be handled by trained staff only.

Applications

- Immunohistochemistry (Formalin/PFA-fixed paraffin-embedded sections)

Immunohistochemistry (Formalin/PFA-fixed paraffin-embedded sections) of human brain, neurons and glia with GPR1 polyclonal antibody (Cat # PAB26333). Immunohistochemistry of formalin-fixed, paraffin-embedded tissue after heat-induced antigen retrieval.

Gene Info — GPR1

Entrez GeneID	2825
---------------	----------------------

Protein Accession#	P46091
--------------------	------------------------

Gene Name	GPR1
-----------	------

Gene Alias	-
------------	---

Gene Description	G protein-coupled receptor 1
------------------	------------------------------

Omim ID	600239
---------	------------------------

Gene Ontology	Hyperlink
---------------	---------------------------

Other Designations	-
--------------------	---

Disease

- [Asthma](#)
- [Bronchopulmonary Dysplasia](#)
- [Respiratory Distress Syndrome](#)