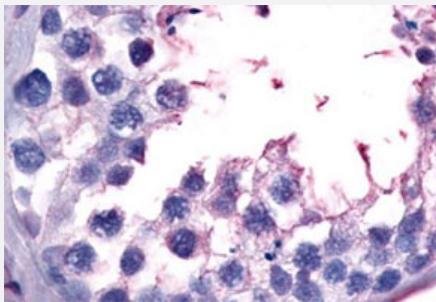


# GPR149 polyclonal antibody

Catalog # PAB26330

Size 50 ug

## Applications



### Immunohistochemistry (Formalin/PFA-fixed paraffin-embedded sections)

Immunohistochemistry (Formalin/PFA-fixed paraffin-embedded sections) of human testis, spermatocytic precursors with GPR149 polyclonal antibody (Cat # PAB26330). Immunohistochemistry of formalin-fixed, paraffin-embedded tissue after heat-induced antigen retrieval.

## Specification

<b>Product Description</b>	Rabbit polyclonal antibody raised against synthetic peptide of GPR149.
<b>Immunogen</b>	A synthetic peptide corresponding to 16 amino acids at C-terminus of human GPR149.
<b>Host</b>	Rabbit
<b>Reactivity</b>	Human
<b>Specificity</b>	BLAST analysis of the peptide immunogen showed no homology with other human proteins.
<b>Form</b>	Liquid
<b>Purification</b>	Immunoaffinity chromatography
<b>Recommend Usage</b>	Immunohistochemistry (Formalin/PFA-fixed paraffin-embedded sections) (6 ug/mL) The optimal working dilution should be determined by the end user.
<b>Storage Buffer</b>	In PBS (0.09% sodium azide)
<b>Storage Instruction</b>	Store at 4°C. For long term storage store at -80°C. Aliquot to avoid repeated freezing and thawing.

**Note**

This product contains sodium azide: a POISONOUS AND HAZARDOUS SUBSTANCE which should be handled by trained staff only.

## Applications

- Immunohistochemistry (Formalin/PFA-fixed paraffin-embedded sections)

Immunohistochemistry (Formalin/PFA-fixed paraffin-embedded sections) of human testis, spermatocytic precursors with GPR149 polyclonal antibody (Cat # PAB26330). Immunohistochemistry of formalin-fixed, paraffin-embedded tissue after heat-induced antigen retrieval.

## Gene Info — GPR149

Entrez GeneID	<a href="#">344758</a>
---------------	------------------------

Protein Accession#	<a href="#">Q86SP6</a>
--------------------	------------------------

Gene Name	GPR149
-----------	--------

Gene Alias	IEDA, PGR10
------------	-------------

Gene Description	G protein-coupled receptor 149
------------------	--------------------------------

Gene Ontology	<a href="#">Hyperlink</a>
---------------	---------------------------

Other Designations	G protein-coupled receptor PGR10
--------------------	----------------------------------

## Disease

- [Tobacco Use Disorder](#)