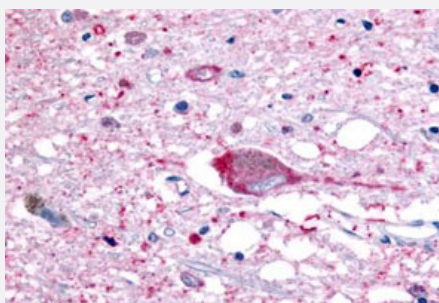


GPR32 polyclonal antibody

Catalog # PAB26328

Size 50 ug

Applications



Immunohistochemistry (Formalin/PFA-fixed paraffin-embedded sections)

Immunohistochemistry (Formalin/PFA-fixed paraffin-embedded sections) of human brain, neurons and glia with GPR32 polyclonal antibody (Cat # PAB26328). Immunohistochemistry of formalin-fixed, paraffin-embedded tissue after heat-induced antigen retrieval.

Specification

| | |
|----------------------------|---|
| Product Description | Rabbit polyclonal antibody raised against synthetic peptide of GPR32. |
| Immunogen | A synthetic peptide corresponding to 17 amino acids at 2nd extracellular domain of human GPR32. |
| Host | Rabbit |
| Reactivity | Human |
| Specificity | BLAST analysis of the peptide immunogen showed no homology with other human proteins. |
| Form | Liquid |
| Purification | Immunoaffinity chromatography |
| Recommend Usage | Immunohistochemistry (Formalin/PFA-fixed paraffin-embedded sections) (7-18 ug/mL) The optimal working dilution should be determined by the end user. |
| Storage Buffer | In PBS (0.09% sodium azide) |
| Storage Instruction | Store at 4°C. For long term storage store at -80°C. Aliquot to avoid repeated freezing and thawing. |

Note

This product contains sodium azide: a POISONOUS AND HAZARDOUS SUBSTANCE which should be handled by trained staff only.

Applications

- Immunohistochemistry (Formalin/PFA-fixed paraffin-embedded sections)

Immunohistochemistry (Formalin/PFA-fixed paraffin-embedded sections) of human brain, neurons and glia with GPR32 polyclonal antibody (Cat # PAB26328). Immunohistochemistry of formalin-fixed, paraffin-embedded tissue after heat-induced antigen retrieval.

Gene Info — GPR32

| | |
|--------------------|-------------------------------|
| Entrez GeneID | 2854 |
| Protein Accession# | O75388 |
| Gene Name | GPR32 |
| Gene Alias | - |
| Gene Description | G protein-coupled receptor 32 |
| Omim ID | 603195 |
| Gene Ontology | Hyperlink |
| Other Designations | - |