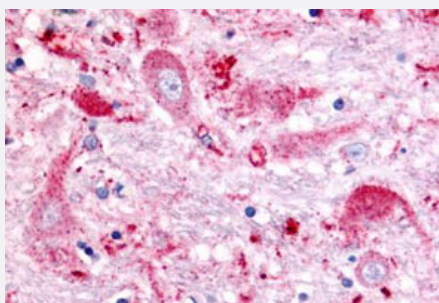


GPR151 polyclonal antibody

Catalog # PAB26323

Size 50 ug

Applications



Immunohistochemistry (Formalin/PFA-fixed paraffin-embedded sections)

Immunohistochemistry (Formalin/PFA-fixed paraffin-embedded sections) of human brain, thalamus with GPR151 polyclonal antibody (Cat # PAB26323). Immunohistochemistry of formalin-fixed, paraffin-embedded tissue after heat-induced antigen retrieval.

Specification

Product Description	Rabbit polyclonal antibody raised against synthetic peptide of GPR151.
Immunogen	A synthetic peptide corresponding to 17 amino acids at C-terminus of human GPR151.
Host	Rabbit
Reactivity	Human
Specificity	BLAST analysis of the peptide immunogen showed no homology with other human proteins.
Form	Liquid
Purification	Immunoaffinity chromatography
Recommend Usage	Immunohistochemistry (Formalin/PFA-fixed paraffin-embedded sections) (2-5 ug/mL) The optimal working dilution should be determined by the end user.
Storage Buffer	In PBS (0.09% sodium azide)
Storage Instruction	Store at 4°C. For long term storage store at -80°C. Aliquot to avoid repeated freezing and thawing.

Note

This product contains sodium azide: a POISONOUS AND HAZARDOUS SUBSTANCE which should be handled by trained staff only.

Applications

- Immunohistochemistry (Formalin/PFA-fixed paraffin-embedded sections)

Immunohistochemistry (Formalin/PFA-fixed paraffin-embedded sections) of human brain, thalamus with GPR151 polyclonal antibody (Cat # PAB26323). Immunohistochemistry of formalin-fixed, paraffin-embedded tissue after heat-induced antigen retrieval.

Gene Info — GPR151

Entrez GeneID	134391
---------------	------------------------

Protein Accession#	Q8TDV0
--------------------	------------------------

Gene Name	GPR151
-----------	--------

Gene Alias	GALR4, GALRL, GPCR, PGR7
------------	--------------------------

Gene Description	G protein-coupled receptor 151
------------------	--------------------------------

Gene Ontology	Hyperlink
---------------	---------------------------

Other Designations	galanin receptor 4 galanin receptor-like putative G-protein coupled receptor
--------------------	--