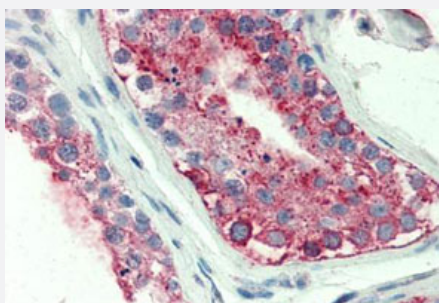


GPR18 polyclonal antibody

Catalog # PAB26320

Size 50 ug

Applications



Immunohistochemistry (Formalin/PFA-fixed paraffin-embedded sections)

Immunohistochemistry (Formalin/PFA-fixed paraffin-embedded sections) of human testis tissue with GPR18 polyclonal antibody (Cat # PAB26320). Immunohistochemistry of formalin-fixed, paraffin-embedded tissue after heat-induced antigen retrieval.

Specification

Product Description	Rabbit polyclonal antibody raised against synthetic peptide of GPR18.
Immunogen	A synthetic peptide corresponding to 18 amino acids at 1st extracellular domain of human GPR18.
Host	Rabbit
Reactivity	Human
Specificity	BLAST analysis of the peptide immunogen showed no homology with other human proteins, except GPR174 (44%).
Form	Liquid
Purification	Immunoaffinity chromatography
Recommend Usage	Immunohistochemistry (Formalin/PFA-fixed paraffin-embedded sections) (6 ug/mL) The optimal working dilution should be determined by the end user.
Storage Buffer	In PBS (0.09% sodium azide)
Storage Instruction	Store at 4°C. For long term storage store at -80°C. Aliquot to avoid repeated freezing and thawing.

Note

This product contains sodium azide: a POISONOUS AND HAZARDOUS SUBSTANCE which should be handled by trained staff only.

Applications

- Immunohistochemistry (Formalin/PFA-fixed paraffin-embedded sections)

Immunohistochemistry (Formalin/PFA-fixed paraffin-embedded sections) of human testis tissue with GPR18 polyclonal antibody (Cat # PAB26320). Immunohistochemistry of formalin-fixed, paraffin-embedded tissue after heat-induced antigen retrieval.

Gene Info — GPR18

Entrez GeneID	2841
Protein Accession#	Q14330
Gene Name	GPR18
Gene Alias	-
Gene Description	G protein-coupled receptor 18
Omim ID	602042
Gene Ontology	Hyperlink
Other Designations	OTTHUMP00000018613