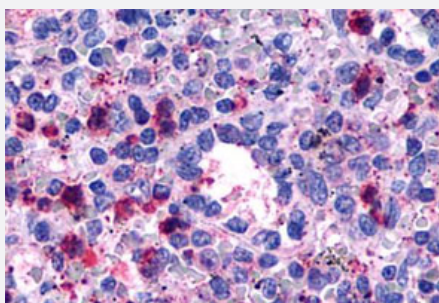


GPR146 polyclonal antibody

Catalog # PAB26312

Size 50 ug

Applications



Immunohistochemistry (Formalin/PFA-fixed paraffin-embedded sections)

Immunohistochemistry (Formalin/PFA-fixed paraffin-embedded sections) of human spleen tissue with GPR146 polyclonal antibody (Cat # PAB26312). Immunohistochemistry of formalin-fixed, paraffin-embedded tissue after heat-induced antigen retrieval.

Specification

Product Description	Rabbit polyclonal antibody raised against synthetic peptide of GPR146.
Immunogen	A synthetic peptide corresponding to 20 amino acids at 3rd cytoplasmic domain of human GPR146.
Host	Rabbit
Reactivity	Human
Specificity	BLAST analysis of the peptide immunogen showed no homology with other human proteins.
Form	Liquid
Purification	Immunoaffinity chromatography
Recommend Usage	Immunohistochemistry (Formalin/PFA-fixed paraffin-embedded sections) (10-20 ug/mL) The optimal working dilution should be determined by the end user.
Storage Buffer	In PBS (0.09% sodium azide)
Storage Instruction	Store at 4°C. For long term storage store at -80°C. Aliquot to avoid repeated freezing and thawing.

Note

This product contains sodium azide: a POISONOUS AND HAZARDOUS SUBSTANCE which should be handled by trained staff only.

Applications

- Immunohistochemistry (Formalin/PFA-fixed paraffin-embedded sections)

Immunohistochemistry (Formalin/PFA-fixed paraffin-embedded sections) of human spleen tissue with GPR146 polyclonal antibody (Cat # PAB26312). Immunohistochemistry of formalin-fixed, paraffin-embedded tissue after heat-induced antigen retrieval.

Gene Info — GPR146

Entrez GeneID	115330
---------------	------------------------

Protein Accession#	Q96CH1
--------------------	------------------------

Gene Name	GPR146
-----------	--------

Gene Alias	PGR8
------------	------

Gene Description	G protein-coupled receptor 146
------------------	--------------------------------

Gene Ontology	Hyperlink
---------------	---------------------------

Other Designations	G protein-coupled receptor PGR8 OTTHUMP00000115491
--------------------	--