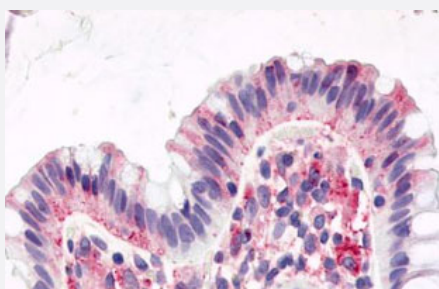


GPR15 polyclonal antibody

Catalog # PAB26310

Size 50 ug

Applications



Immunohistochemistry (Formalin/PFA-fixed paraffin-embedded sections)

Immunohistochemistry (Formalin/PFA-fixed paraffin-embedded sections) of human colon, surface epithelium with GPR15 polyclonal antibody (Cat # PAB26310). Immunohistochemistry of formalin-fixed, paraffin-embedded tissue after heat-induced antigen retrieval.

Specification

Product Description	Rabbit polyclonal antibody raised against synthetic peptide of GPR15.
Immunogen	A synthetic peptide corresponding to 16 amino acids at 1st cytoplasmic domain of human GPR15.
Host	Rabbit
Reactivity	Human, Monkey
Specificity	BLAST analysis of the peptide immunogen showed no homology with other human proteins.
Form	Liquid
Purification	Immunoaffinity chromatography
Recommend Usage	Immunohistochemistry (Formalin/PFA-fixed paraffin-embedded sections) (10-20 ug/mL) The optimal working dilution should be determined by the end user.
Storage Buffer	In PBS (0.09% sodium azide)
Storage Instruction	Store at 4°C. For long term storage store at -80°C. Aliquot to avoid repeated freezing and thawing.

Note

This product contains sodium azide: a POISONOUS AND HAZARDOUS SUBSTANCE which should be handled by trained staff only.

Applications

- Immunohistochemistry (Formalin/PFA-fixed paraffin-embedded sections)

Immunohistochemistry (Formalin/PFA-fixed paraffin-embedded sections) of human colon, surface epithelium with GPR15 polyclonal antibody (Cat # PAB26310). Immunohistochemistry of formalin-fixed, paraffin-embedded tissue after heat-induced antigen retrieval.

Gene Info — GPR15

Entrez GeneID	2838
Protein Accession#	P49685
Gene Name	GPR15
Gene Alias	MGC126828, MGC126830
Gene Description	G protein-coupled receptor 15
Omim ID	601166
Gene Ontology	Hyperlink
Other Designations	-