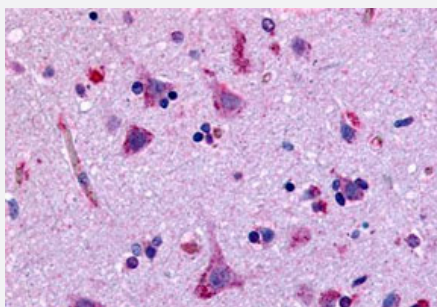


GPR45 polyclonal antibody

Catalog # PAB26306

Size 50 ug

Applications



Immunohistochemistry (Formalin/PFA-fixed paraffin-embedded sections)

Immunohistochemistry (Formalin/PFA-fixed paraffin-embedded sections) of human brain, neurons and glia with GPR45 polyclonal antibody (Cat # PAB26306). Immunohistochemistry of formalin-fixed, paraffin-embedded tissue after heat-induced antigen retrieval.

Specification

Product Description	Rabbit polyclonal antibody raised against synthetic peptide of GPR45.
Immunogen	A synthetic peptide corresponding to 16 amino acids at N-terminal extracellular domain of human GPR45.
Host	Rabbit
Reactivity	Human
Specificity	BLAST analysis of the peptide immunogen showed no homology with other human proteins.
Form	Liquid
Purification	Immunoaffinity chromatography
Recommend Usage	Immunohistochemistry (Formalin/PFA-fixed paraffin-embedded sections) (4 ug/mL) The optimal working dilution should be determined by the end user.
Storage Buffer	In PBS (0.09% sodium azide)
Storage Instruction	Store at 4°C. For long term storage store at -80°C. Aliquot to avoid repeated freezing and thawing.

Note

This product contains sodium azide: a POISONOUS AND HAZARDOUS SUBSTANCE which should be handled by trained staff only.

Applications

- Immunohistochemistry (Formalin/PFA-fixed paraffin-embedded sections)

Immunohistochemistry (Formalin/PFA-fixed paraffin-embedded sections) of human brain, neurons and glia with GPR45 polyclonal antibody (Cat # PAB26306). Immunohistochemistry of formalin-fixed, paraffin-embedded tissue after heat-induced antigen retrieval.

Gene Info — GPR45

Entrez GeneID	11250
---------------	-----------------------

Protein Accession#	Q9Y5Y3
--------------------	------------------------

Gene Name	GPR45
-----------	-------

Gene Alias	PSP24, PSP24(ALPHA), PSP24A
------------	-----------------------------

Gene Description	G protein-coupled receptor 45
------------------	-------------------------------

Omim ID	604838
---------	------------------------

Gene Ontology	Hyperlink
---------------	---------------------------

Gene Summary	This intronless gene encodes a member of the G protein-coupled receptor (GPCR) family. Members of this protein family contain seven putative transmembrane domains and may mediate signaling processes to the interior of the cell via activation of heterotrimeric G proteins. This protein may function in the central nervous system. [provided by RefSeq]
--------------	---

Other Designations	high-affinity lysophosphatidic acid receptor
--------------------	--