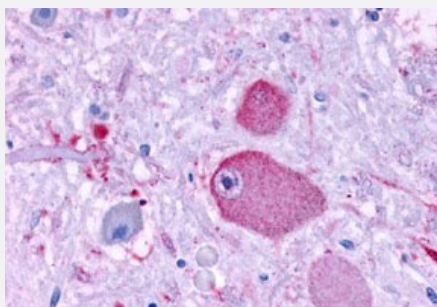


# GPR37 polyclonal antibody

Catalog # PAB26305

Size 50 ug

## Applications



### Immunohistochemistry (Formalin/PFA-fixed paraffin-embedded sections)

Immunohistochemistry (Formalin/PFA-fixed paraffin-embedded sections) of human brain, neurons and glia with GPR37 polyclonal antibody (Cat # PAB26305). Immunohistochemistry of formalin-fixed, paraffin-embedded tissue after heat-induced antigen retrieval.

## Specification

<b>Product Description</b>	Rabbit polyclonal antibody raised against synthetic peptide of GPR37.
<b>Immunogen</b>	A synthetic peptide corresponding to 20 amino acids at N-terminal extracellular domain of human GPR37.
<b>Host</b>	Rabbit
<b>Reactivity</b>	Human
<b>Specificity</b>	BLAST analysis of the peptide immunogen showed no homology with other human proteins.
<b>Form</b>	Liquid
<b>Purification</b>	Immunoaffinity chromatography
<b>Recommend Usage</b>	Immunohistochemistry (Formalin/PFA-fixed paraffin-embedded sections) (1 ug/mL) The optimal working dilution should be determined by the end user.
<b>Storage Buffer</b>	In PBS (0.09% sodium azide)
<b>Storage Instruction</b>	Store at 4°C. For long term storage store at -80°C. Aliquot to avoid repeated freezing and thawing.

**Note**

This product contains sodium azide: a POISONOUS AND HAZARDOUS SUBSTANCE which should be handled by trained staff only.

## Applications

- Immunohistochemistry (Formalin/PFA-fixed paraffin-embedded sections)

Immunohistochemistry (Formalin/PFA-fixed paraffin-embedded sections) of human brain, neurons and glia with GPR37 polyclonal antibody (Cat # PAB26305). Immunohistochemistry of formalin-fixed, paraffin-embedded tissue after heat-induced antigen retrieval.

## Gene Info — GPR37

Entrez GeneID	<a href="#">2861</a>
Protein Accession#	<a href="#">O15354</a>
Gene Name	GPR37
Gene Alias	EDNRBL, PAELR, hET(B)R-LP
Gene Description	G protein-coupled receptor 37 (endothelin receptor type B-like)
Omim ID	<a href="#">602583</a>
Gene Ontology	<a href="#">Hyperlink</a>
Other Designations	G protein-coupled receptor 37 Parkin-associated endothelin receptor-like receptor endothelin receptor type B-like

## Disease

- [Genetic Predisposition to Disease](#)
- [Hyperparathyroidism](#)