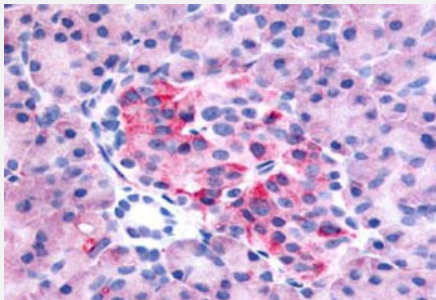


GPR35 polyclonal antibody

Catalog # PAB26286

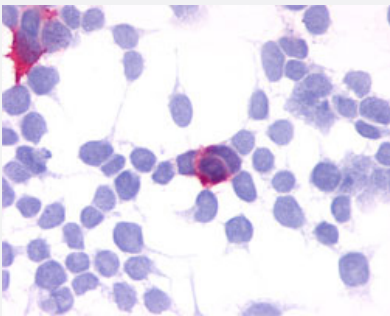
Size 50 ug

Applications



Immunohistochemistry (Formalin/PFA-fixed paraffin-embedded sections)

Immunohistochemistry (Formalin/PFA-fixed paraffin-embedded sections) of human pancreas tissue with GPR35 polyclonal antibody (Cat # PAB26286). Immunohistochemistry of formalin-fixed, paraffin-embedded tissue after heat-induced antigen retrieval.



Immunocytochemistry

Immunocytochemical analysis of GPR35 in 293 cell lysate with GPR35 polyclonal antibody (Cat # PAB26286).

Specification

Product Description	Rabbit polyclonal antibody raised against synthetic peptide of GPR35.
Immunogen	A synthetic peptide corresponding to 19 amino acids at C-terminus of human GPR35.
Host	Rabbit
Reactivity	Human
Specificity	BLAST analysis of the peptide immunogen showed no homology with other human proteins.
Form	Liquid
Purification	Immunoaffinity chromatography

Recommend Usage	Immunohistochemistry (Formalin/PFA-fixed paraffin-embedded sections) (12-23 ug/mL) The optimal working dilution should be determined by the end user.
Storage Buffer	In PBS (0.09% sodium azide)
Storage Instruction	Store at 4°C. For long term storage store at -80°C. Aliquot to avoid repeated freezing and thawing.
Note	This product contains sodium azide: a POISONOUS AND HAZARDOUS SUBSTANCE which should be handled by trained staff only.

Applications

- Immunohistochemistry (Formalin/PFA-fixed paraffin-embedded sections)

Immunohistochemistry (Formalin/PFA-fixed paraffin-embedded sections) of human pancreas tissue with GPR35 polyclonal antibody (Cat # PAB26286). Immunohistochemistry of formalin-fixed, paraffin-embedded tissue after heat-induced antigen retrieval.

- Immunocytochemistry

Immunocytochemical analysis of GPR35 in 293 cell lysate with GPR35 polyclonal antibody (Cat # PAB26286).

Gene Info — GPR35

Entrez GeneID	2859
Protein Accession#	Q9HC97
Gene Name	GPR35
Gene Alias	-
Gene Description	G protein-coupled receptor 35
Omim ID	602646
Gene Ontology	Hyperlink
Other Designations	-

Pathway

- [Neuroactive ligand-receptor interaction](#)

Disease

- [Atherosclerosis](#)
- [Calcinosis](#)