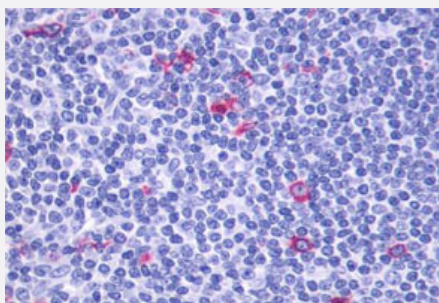


# GPR137 polyclonal antibody

Catalog # PAB26284

Size 50 ug

## Applications



### Immunohistochemistry (Formalin/PFA-fixed paraffin-embedded sections)

Immunohistochemistry (Formalin/PFA-fixed paraffin-embedded sections) of human tonsil tissue with GPR137 polyclonal antibody (Cat # PAB26284). Immunohistochemistry of formalin-fixed, paraffin-embedded tissue after heat-induced antigen retrieval.

## Specification

<b>Product Description</b>	Rabbit polyclonal antibody raised against synthetic peptide of GPR137.
<b>Immunogen</b>	A synthetic peptide corresponding to 17 amino acids at 1st extracellular domain of human GPR137.
<b>Host</b>	Rabbit
<b>Reactivity</b>	Dog, Horse, Human, Monkey, Mouse, Pig, Rat
<b>Specificity</b>	BLAST analysis of the peptide immunogen showed no homology with other human proteins, except GPR137B (53%).
<b>Form</b>	Liquid
<b>Purification</b>	Immunoaffinity chromatography
<b>Recommend Usage</b>	Immunohistochemistry (Formalin/PFA-fixed paraffin-embedded sections) (16 ug/mL) The optimal working dilution should be determined by the end user.
<b>Storage Buffer</b>	In PBS (0.09% sodium azide)
<b>Storage Instruction</b>	Store at 4°C. For long term storage store at -80°C. Aliquot to avoid repeated freezing and thawing.

**Note**

This product contains sodium azide: a POISONOUS AND HAZARDOUS SUBSTANCE which should be handled by trained staff only.

## Applications

- Immunohistochemistry (Formalin/PFA-fixed paraffin-embedded sections)

Immunohistochemistry (Formalin/PFA-fixed paraffin-embedded sections) of human tonsil tissue with GPR137 polyclonal antibody (Cat # PAB26284). Immunohistochemistry of formalin-fixed, paraffin-embedded tissue after heat-induced antigen retrieval.

## Gene Info — GPR137

Entrez GeneID	<a href="#">56834</a>
Protein Accession#	<a href="#">Q96N19</a>
Gene Name	GPR137
Gene Alias	C11orf4, GPR137A, TM7SF1L1
Gene Description	G protein-coupled receptor 137
Gene Ontology	<a href="#">Hyperlink</a>
Other Designations	-