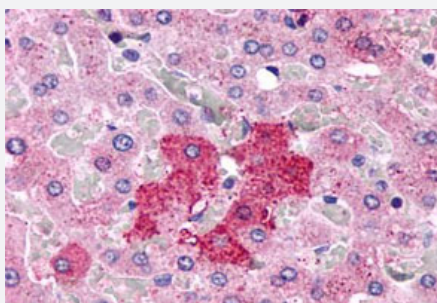


GPR153 polyclonal antibody

Catalog # PAB26283

Size 50 ug

Applications



Immunohistochemistry (Formalin/PFA-fixed paraffin-embedded sections)

Immunohistochemistry (Formalin/PFA-fixed paraffin-embedded sections) of human liver, hepatocytes with GPR153 polyclonal antibody (Cat # PAB26283). Immunohistochemistry of formalin-fixed, paraffin-embedded tissue after heat-induced antigen retrieval.

Specification

Product Description	Rabbit polyclonal antibody raised against synthetic peptide of GPR153.
Immunogen	A synthetic peptide corresponding to 17 amino acids at 2nd extracellular domain of human GPR153.
Host	Rabbit
Reactivity	Bovine, Dog, Hamster, Human, Monkey, Mouse, Pig, Rabbit, Rat
Specificity	BLAST analysis of the peptide immunogen showed no homology with other human proteins, except GPR162 (53%).
Form	Liquid
Purification	Immunoaffinity chromatography
Recommend Usage	Immunohistochemistry (Formalin/PFA-fixed paraffin-embedded sections) (12 ug/mL) The optimal working dilution should be determined by the end user.
Storage Buffer	In PBS (0.09% sodium azide)
Storage Instruction	Store at 4°C. For long term storage store at -80°C. Aliquot to avoid repeated freezing and thawing.

Note

This product contains sodium azide: a POISONOUS AND HAZARDOUS SUBSTANCE which should be handled by trained staff only.

Applications

- Immunohistochemistry (Formalin/PFA-fixed paraffin-embedded sections)

Immunohistochemistry (Formalin/PFA-fixed paraffin-embedded sections) of human liver, hepatocytes with GPR153 polyclonal antibody (Cat # PAB26283). Immunohistochemistry of formalin-fixed, paraffin-embedded tissue after heat-induced antigen retrieval.

Gene Info — GPR153

Entrez GeneID	387509
---------------	------------------------

Protein Accession#	NP_997253.1
--------------------	-----------------------------

Gene Name	GPR153
-----------	--------

Gene Alias	DKFZp762B2210, PGR1
------------	---------------------

Gene Description	G protein-coupled receptor 153
------------------	--------------------------------

Gene Ontology	Hyperlink
---------------	---------------------------

Other Designations	-
--------------------	---