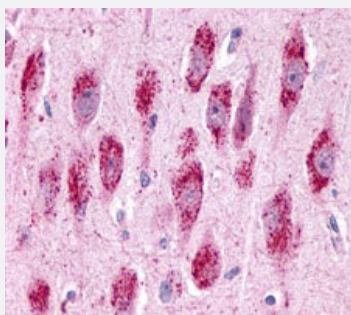


GPR3 polyclonal antibody

Catalog # PAB26275

Size 50 ug

Applications



Immunohistochemistry (Formalin/PFA-fixed paraffin-embedded sections)

Immunohistochemistry (Formalin/PFA-fixed paraffin-embedded sections) of human brain, neurons and glia with GPR3 polyclonal antibody (Cat # PAB26275). Immunohistochemistry of formalin-fixed, paraffin-embedded tissue after heat-induced antigen retrieval.

Specification

Product Description	Rabbit polyclonal antibody raised against synthetic peptide of GPR3.
Immunogen	A synthetic peptide corresponding to 15 amino acids at 2nd extracellular domain of human GPR3.
Host	Rabbit
Reactivity	Hamster, Human, Monkey, Mouse, Rat
Specificity	BLAST analysis of the peptide immunogen showed no homology with other human proteins.
Form	Liquid
Purification	Immunoaffinity chromatography
Recommend Usage	Immunohistochemistry (Formalin/PFA-fixed paraffin-embedded sections) (6 ug/mL) The optimal working dilution should be determined by the end user.
Storage Buffer	In PBS (0.09% sodium azide)
Storage Instruction	Store at 4°C. For long term storage store at -80°C. Aliquot to avoid repeated freezing and thawing.

Note

This product contains sodium azide: a POISONOUS AND HAZARDOUS SUBSTANCE which should be handled by trained staff only.

Applications

- Immunohistochemistry (Formalin/PFA-fixed paraffin-embedded sections)

Immunohistochemistry (Formalin/PFA-fixed paraffin-embedded sections) of human brain, neurons and glia with GPR3 polyclonal antibody (Cat # PAB26275). Immunohistochemistry of formalin-fixed, paraffin-embedded tissue after heat-induced antigen retrieval.

Gene Info — GPR3

Entrez GeneID	2827
Protein Accession#	P46089
Gene Name	GPR3
Gene Alias	ACCA
Gene Description	G protein-coupled receptor 3
Omim ID	600241
Gene Ontology	Hyperlink
Other Designations	OTTHUMP00000003475 OTTHUMP00000043209 adenylate cyclase constitutive activator

Disease

- [Genetic Predisposition to Disease](#)
- [Ovarian Failure](#)