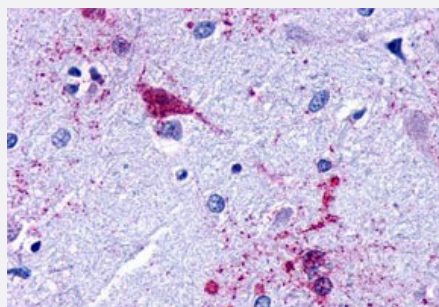


# LPAR3 polyclonal antibody

Catalog # PAB26273

Size 50 ug

## Applications



### Immunohistochemistry (Formalin/PFA-fixed paraffin-embedded sections)

Immunohistochemistry (Formalin/PFA-fixed paraffin-embedded sections) of human brain, amygdala with LPAR3 polyclonal antibody (Cat # PAB26273). Immunohistochemistry of formalin-fixed, paraffin-embedded tissue after heat-induced antigen retrieval.

## Specification

<b>Product Description</b>	Rabbit polyclonal antibody raised against synthetic peptide of LPAR3.
<b>Immunogen</b>	A synthetic peptide corresponding to 16 amino acid at cytoplasmic domain of human LPAR3.
<b>Host</b>	Rabbit
<b>Reactivity</b>	Bovine, Dog, Hamster, Horse, Human, Monkey, Mouse, Rat
<b>Specificity</b>	BLAST analysis of the peptide immunogen showed no homology with other human proteins.
<b>Form</b>	Liquid
<b>Purification</b>	Immunoaffinity chromatography
<b>Recommend Usage</b>	Immunohistochemistry (Formalin/PFA-fixed paraffin-embedded sections) (10 ug/mL) The optimal working dilution should be determined by the end user.
<b>Storage Buffer</b>	In PBS (0.09% sodium azide)
<b>Storage Instruction</b>	Store at 4°C. For long term storage store at -80°C. Aliquot to avoid repeated freezing and thawing.

**Note**

This product contains sodium azide: a POISONOUS AND HAZARDOUS SUBSTANCE which should be handled by trained staff only.

## Applications

- Immunohistochemistry (Formalin/PFA-fixed paraffin-embedded sections)

Immunohistochemistry (Formalin/PFA-fixed paraffin-embedded sections) of human brain, amygdala with LPAR3 polyclonal antibody (Cat # PAB26273). Immunohistochemistry of formalin-fixed, paraffin-embedded tissue after heat-induced antigen retrieval.

## Gene Info — LPAR3

Entrez GeneID [23566](#)

Protein Accession# [Q9UBY5](#)

Gene Name LPAR3

Gene Alias EDG7, Edg-7, FLJ98231, GPCR, HOFNH30, LP-A3, LPA3, RP4-678I3

Gene Description lysophosphatidic acid receptor 3

Omim ID [605106](#)

Gene Ontology [Hyperlink](#)

**Gene Summary** This gene encodes a member of the G protein-coupled receptor family, as well as the EDG family of proteins. This protein functions as a cellular receptor for lysophosphatidic acid and mediates lysophosphatidic acid-evoked calcium mobilization. This receptor couples predominantly to G(q/11) alpha proteins. [provided by RefSeq]

**Other Designations** LPA receptor EDG7|OTTHUMP00000011573|calcium-mobilizing lysophosphatidic acid receptor LP-A3|endothelial cell differentiation gene 7|endothelial differentiation, lysophosphatidic acid G-protein-coupled receptor, 7

## Pathway

- [Neuroactive ligand-receptor interaction](#)

## Disease

- [Diabetes Mellitus](#)
- [Genetic Predisposition to Disease](#)