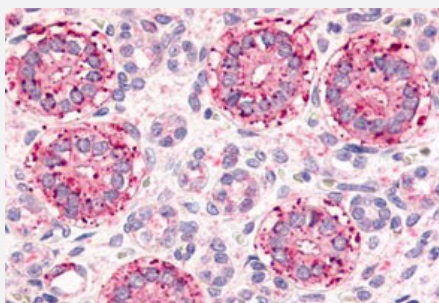


FZD2 polyclonal antibody

Catalog # PAB26252

Size 50 ug

Applications



Immunohistochemistry (Formalin/PFA-fixed paraffin-embedded sections)

Immunohistochemistry (Formalin/PFA-fixed paraffin-embedded sections) of human fetal kidney tissue with FZD2 polyclonal antibody (Cat # PAB26252). Immunohistochemistry of formalin-fixed, paraffin-embedded tissue after heat-induced antigen retrieval.

Specification

Product Description	Rabbit polyclonal antibody raised against synthetic peptide of FZD2.
Immunogen	A synthetic peptide corresponding to 20 amino acid at N-terminus of human FZD2.
Host	Rabbit
Reactivity	Bovine, Dog, Hamster, Horse, Human, Monkey, Mouse, Pig, Rabbit, Rat
Specificity	BLAST analysis of the peptide immunogen showed no homology with other human proteins, except FZD7 (60%), DMAP1 (40%).
Form	Liquid
Purification	Immunoaffinity chromatography
Recommend Usage	Immunohistochemistry (Formalin/PFA-fixed paraffin-embedded sections) (8 ug/mL) The optimal working dilution should be determined by the end user.
Storage Buffer	In PBS (0.09% sodium azide)
Storage Instruction	Store at 4°C. For long term storage store at -80°C. Aliquot to avoid repeated freezing and thawing.

Note

This product contains sodium azide: a POISONOUS AND HAZARDOUS SUBSTANCE which should be handled by trained staff only.

Applications

- Immunohistochemistry (Formalin/PFA-fixed paraffin-embedded sections)

Immunohistochemistry (Formalin/PFA-fixed paraffin-embedded sections) of human fetal kidney tissue with FZD2 polyclonal antibody (Cat # PAB26252). Immunohistochemistry of formalin-fixed, paraffin-embedded tissue after heat-induced antigen retrieval.

Gene Info — FZD2

Entrez GeneID [2535](#)

Protein Accession# [Q14332](#)

Gene Name FZD2

Gene Alias -

Gene Description frizzled homolog 2 (Drosophila)

Omim ID [600667](#)

Gene Ontology [Hyperlink](#)

Gene Summary Members of the 'frizzled' gene family encode 7-transmembrane domain proteins that are receptors for Wnt signaling proteins. The expression of the FZD2 gene appears to be developmentally regulated, with high levels of expression in fetal kidney and lung and in adult colon and ovary. [provided by RefSeq]

Other Designations frizzled 2

Pathway

- [Basal cell carcinoma](#)
- [Colorectal cancer](#)
- [Melanogenesis](#)
- [Pathways in cancer](#)

- [Wnt signaling pathway](#)

Disease

- [Bipolar Disorder](#)
- [Cleft Lip](#)
- [Cleft Palate](#)