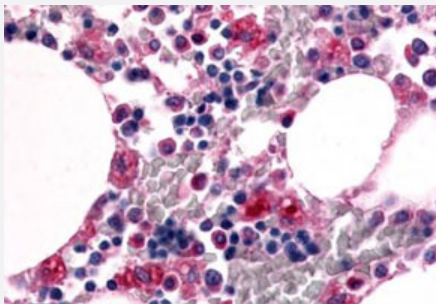


EMR1 polyclonal antibody

Catalog # PAB26248

Size 50 ug

Applications



Immunohistochemistry (Formalin/PFA-fixed paraffin-embedded sections)

Immunohistochemistry (Formalin/PFA-fixed paraffin-embedded sections) of human bone marrow tissue with EMR1 polyclonal antibody (Cat # PAB26248). Immunohistochemistry of formalin-fixed, paraffin-embedded tissue after heat-induced antigen retrieval.

Specification

Product Description	Rabbit polyclonal antibody raised against synthetic peptide of EMR1.
Immunogen	A synthetic peptide corresponding to 19 amino acid at N-terminus of human EMR1.
Host	Rabbit
Reactivity	Human
Specificity	BLAST analysis of the peptide immunogen showed no homology with other human proteins.
Form	Liquid
Purification	Immunoaffinity chromatography
Recommend Usage	Immunohistochemistry (Formalin/PFA-fixed paraffin-embedded sections) (18-36 ug/mL) The optimal working dilution should be determined by the end user.
Storage Buffer	In PBS (0.09% sodium azide)
Storage Instruction	Store at 4°C. For long term storage store at -80°C. Aliquot to avoid repeated freezing and thawing.

Note

This product contains sodium azide: a POISONOUS AND HAZARDOUS SUBSTANCE which should be handled by trained staff only.

Applications

- Immunohistochemistry (Formalin/PFA-fixed paraffin-embedded sections)

Immunohistochemistry (Formalin/PFA-fixed paraffin-embedded sections) of human bone marrow tissue with EMR1 polyclonal antibody (Cat # PAB26248). Immunohistochemistry of formalin-fixed, paraffin-embedded tissue after heat-induced antigen retrieval.

- Enzyme-linked Immunoabsorbent Assay

Gene Info — EMR1

Entrez GeneID [2015](#)

Protein Accession# [Q14246](#)

Gene Name EMR1

Gene Alias TM7LN3

Gene Description egf-like module containing, mucin-like, hormone receptor-like 1

Omim ID [600493](#)

Gene Ontology [Hyperlink](#)

Gene Summary This gene encodes a protein that has a domain resembling seven transmembrane G protein-coupled hormone receptors (7TM receptors) at its C-terminus. The N-terminus of the encoded protein has six EGF-like modules, separated from the transmembrane segments by a serine/threonine-rich domain, a feature reminiscent of mucin-like, single-span, integral membrane glycoproteins with adhesive properties. [provided by RefSeq]

Other Designations egf-like module containing, mucin-like, hormone receptor-like sequence 1

Disease

- [Genetic Predisposition to Disease](#)
- [Hyperparathyroidism](#)