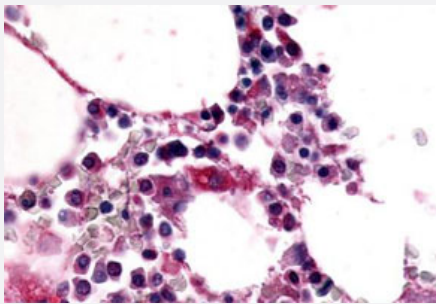


# EMR1 polyclonal antibody

Catalog # PAB26229

Size 50 ug

## Applications



### Immunohistochemistry (Formalin/PFA-fixed paraffin-embedded sections)

Immunohistochemistry (Formalin/PFA-fixed paraffin-embedded sections) of human bone marrow tissue with EMR1 polyclonal antibody (Cat # PAB26229). Immunohistochemistry of formalin-fixed, paraffin-embedded tissue after heat-induced antigen retrieval.

## Specification

<b>Product Description</b>	Rabbit polyclonal antibody raised against synthetic peptide of EMR1.
<b>Immunogen</b>	A synthetic peptide corresponding to 16 amino acid at N-terminus of human EMR1.
<b>Host</b>	Rabbit
<b>Reactivity</b>	Human
<b>Specificity</b>	BLAST analysis of the peptide immunogen showed no homology with other human proteins.
<b>Form</b>	Liquid
<b>Purification</b>	Immunoaffinity chromatography
<b>Recommend Usage</b>	Immunohistochemistry (Formalin/PFA-fixed paraffin-embedded sections) (10-20 ug/mL) The optimal working dilution should be determined by the end user.
<b>Storage Buffer</b>	In PBS (0.09% sodium azide)
<b>Storage Instruction</b>	Store at 4°C. For long term storage store at -80°C. Aliquot to avoid repeated freezing and thawing.

**Note**

This product contains sodium azide: a POISONOUS AND HAZARDOUS SUBSTANCE which should be handled by trained staff only.

## Applications

- Immunohistochemistry (Formalin/PFA-fixed paraffin-embedded sections)

Immunohistochemistry (Formalin/PFA-fixed paraffin-embedded sections) of human bone marrow tissue with EMR1 polyclonal antibody (Cat # PAB26229). Immunohistochemistry of formalin-fixed, paraffin-embedded tissue after heat-induced antigen retrieval.

## Gene Info — EMR1

**Entrez GeneID** [2015](#)

**Protein Accession#** [Q14246](#)

**Gene Name** EMR1

**Gene Alias** TM7LN3

**Gene Description** egf-like module containing, mucin-like, hormone receptor-like 1

**Omim ID** [600493](#)

**Gene Ontology** [Hyperlink](#)

**Gene Summary** This gene encodes a protein that has a domain resembling seven transmembrane G protein-coupled hormone receptors (7TM receptors) at its C-terminus. The N-terminus of the encoded protein has six EGF-like modules, separated from the transmembrane segments by a serine/threonine-rich domain, a feature reminiscent of mucin-like, single-span, integral membrane glycoproteins with adhesive properties. [provided by RefSeq]

**Other Designations** egf-like module containing, mucin-like, hormone receptor-like sequence 1

## Disease

- [Genetic Predisposition to Disease](#)
- [Hyperparathyroidism](#)