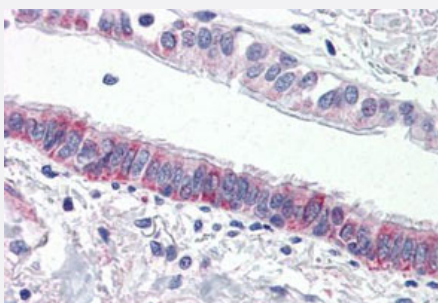


# F2RL3 polyclonal antibody

Catalog # PAB26190

Size 50 ug

## Applications



### Immunohistochemistry (Formalin/PFA-fixed paraffin-embedded sections)

Immunohistochemistry (Formalin/PFA-fixed paraffin-embedded sections) of human lung, respiratory epithelium with F2RL3 polyclonal antibody (Cat # PAB26190). Immunohistochemistry of formalin-fixed, paraffin-embedded tissue after heat-induced antigen retrieval.

## Specification

<b>Product Description</b>	Rabbit polyclonal antibody raised against synthetic peptide of F2RL3.
<b>Immunogen</b>	A synthetic peptide corresponding to 16 amino acid at N-terminus of human F2RL3.
<b>Host</b>	Rabbit
<b>Reactivity</b>	Human
<b>Specificity</b>	BLAST analysis of the peptide immunogen showed no homology with other human proteins.
<b>Form</b>	Liquid
<b>Purification</b>	Immunoaffinity chromatography
<b>Recommend Usage</b>	Immunohistochemistry (Formalin/PFA-fixed paraffin-embedded sections) (6-13 ug/mL) The optimal working dilution should be determined by the end user.
<b>Storage Buffer</b>	In PBS (0.09% sodium azide)
<b>Storage Instruction</b>	Store at 4°C. For long term storage store at -80°C. Aliquot to avoid repeated freezing and thawing.

**Note**

This product contains sodium azide: a POISONOUS AND HAZARDOUS SUBSTANCE which should be handled by trained staff only.

## Applications

- Immunohistochemistry (Formalin/PFA-fixed paraffin-embedded sections)

Immunohistochemistry (Formalin/PFA-fixed paraffin-embedded sections) of human lung, respiratory epithelium with F2RL3 polyclonal antibody (Cat # PAB26190). Immunohistochemistry of formalin-fixed, paraffin-embedded tissue after heat-induced antigen retrieval.

## Gene Info — F2RL3

**Entrez GeneID** [9002](#)

**Protein Accession#** [Q96RI0](#)

**Gene Name** F2RL3

**Gene Alias** PAR4

**Gene Description** coagulation factor II (thrombin) receptor-like 3

**Omim ID** [602779](#)

**Gene Ontology** [Hyperlink](#)

**Gene Summary** Coagulation factor II (thrombin) receptor-like 3 (F2RL3) is a member of the large family of 7-trans membrane-region receptors that couple to guanosine-nucleotide-binding proteins. F2RL3 is also a member of the protease-activated receptor family. F2RL3 is activated by proteolytic cleavage of its extracellular amino terminus. The new amino terminus functions as a tethered ligand and activates the receptor. F2RL3 is activated by thrombin and trypsin. [provided by RefSeq]

**Other Designations** protease-activated receptor-4|proteinase-activated receptor-4

## Pathway

- [Neuroactive ligand-receptor interaction](#)

## Disease

- [Asthma](#)

- [Cardiovascular Diseases](#)
- [Diabetes Mellitus](#)
- [Edema](#)
- [Kidney Failure](#)