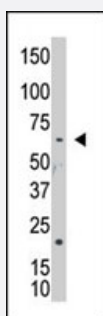


NEK8 polyclonal antibody

Catalog # PAB2619

Size 400 uL

Applications



Western Blot (Cell lysate)

The NEK8 polyclonal antibody (Cat # PAB2619) is used in Western blot to detect NEK8 in A2058 cell lysate

Specification

Product Description	Rabbit polyclonal antibody raised against synthetic peptide of NEK8.
Immunogen	A synthetic peptide (conjugated with KLH) corresponding to N-terminus of human NEK8.
Host	Rabbit
Reactivity	Human
Form	Liquid
Purification	Protein G purification
Recommend Usage	Western Blot (1:1000) The optimal working dilution should be determined by the end user.
Storage Buffer	In PBS (0.09% sodium azide)
Storage Instruction	Store at 4°C. For long term storage store at -20°C. Aliquot to avoid repeated freezing and thawing.
Note	This product contains sodium azide: a POISONOUS AND HAZARDOUS SUBSTANCE which should be handled by trained staff only.

Applications

- Western Blot (Cell lysate)

The NEK8 polyclonal antibody (Cat # PAB2619) is used in Western blot to detect NEK8 in A2058 cell lysate

Gene Info — NEK8

Entrez GeneID [284086](#)

Protein Accession# [NP_835464;Q86SG6](#)

Gene Name NEK8

Gene Alias JCK, MGC138445, NEK12A

Gene Description NIMA (never in mitosis gene a)- related kinase 8

Omim ID [609799](#)

Gene Ontology [Hyperlink](#)

Gene Summary This gene encodes a member of the serine/threonine protein kinase family related to NIMA (never in mitosis, gene A) of *Aspergillus nidulans*. The encoded protein may play a role in cell cycle progression from G2 to M phase. Mutations in the related mouse gene are associated with a disease phenotype that closely parallels the juvenile autosomal recessive form of polycystic kidney disease in humans. [provided by RefSeq]

Other Designations NIMA-family kinase NEK8|NIMA-related kinase 12a|NIMA-related kinase 8|serine/threonine-protein kinase NEK8

Publication Reference

- [Nek8 mutation causes overexpression of galectin-1, sorcin, and vimentin and accumulation of the major urinary protein in renal cysts of jck mice.](#)

Valkova N, Yunis R, Mak SK, Kang K, Kultz D.

Molecular & Cellular Proteomics 2005 Jul; 4(7):1009.

- [Nek8, a NIMA family kinase member, is overexpressed in primary human breast tumors.](#)

Bowers AJ, Boylan JF.

Gene 2004 Mar; 328:135.

- [Purification, cloning, and characterization of Nek8, a novel NIMA-related kinase, and its candidate substrate Bcd2.](#)

Holland PM, Milne A, Garka K, Johnson RS, Willis C, Sims JE, Rauch CT, Bird TA, Virca GD.

The Journal of Biological Chemistry 2002 May; 277(18):16229.

Application: IF, WB-Ce, WB-Tr, Human, HeLa, HT29 cells