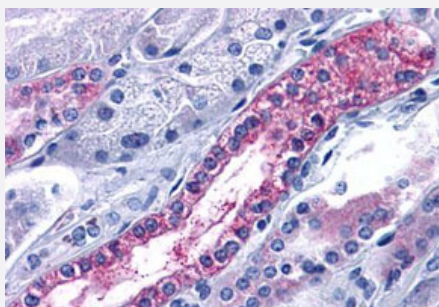


# CXCR7 polyclonal antibody

Catalog # PAB26187

Size 50 ug

## Applications



### Immunohistochemistry (Formalin/PFA-fixed paraffin-embedded sections)

Immunohistochemistry (Formalin/PFA-fixed paraffin-embedded sections) of human kidney tubule tissue with CXCR7 polyclonal antibody (Cat # PAB26187). Immunohistochemistry of formalin-fixed, paraffin-embedded tissue after heat-induced antigen retrieval.

## Specification

<b>Product Description</b>	Rabbit polyclonal antibody raised against synthetic peptide of CXCR7.
<b>Immunogen</b>	A synthetic peptide corresponding to 19 amino acid at extracellular domain of human CXCR7.
<b>Host</b>	Rabbit
<b>Reactivity</b>	Bovine, Dog, Hamster, Horse, Human, Mouse, Pig, Rabbit, Rat
<b>Specificity</b>	BLAST analysis of the peptide immunogen showed no homology with other human proteins.
<b>Form</b>	Liquid
<b>Purification</b>	Immunoaffinity chromatography
<b>Recommend Usage</b>	Immunohistochemistry (Formalin/PFA-fixed paraffin-embedded sections) (10 ug/mL) The optimal working dilution should be determined by the end user.
<b>Storage Buffer</b>	In PBS (0.09% sodium azide)
<b>Storage Instruction</b>	Store at 4°C. For long term storage store at -80°C. Aliquot to avoid repeated freezing and thawing.

**Note**

This product contains sodium azide: a POISONOUS AND HAZARDOUS SUBSTANCE which should be handled by trained staff only.

## Applications

- Immunohistochemistry (Formalin/PFA-fixed paraffin-embedded sections)

Immunohistochemistry (Formalin/PFA-fixed paraffin-embedded sections) of human kidney tubule tissue with CXCR7 polyclonal antibody (Cat # PAB26187). Immunohistochemistry of formalin-fixed, paraffin-embedded tissue after heat-induced antigen retrieval.

- Flow Cytometry

## Gene Info — CXCR7

**Entrez GeneID** [57007](#)

**Protein Accession#** [P25106](#)

**Gene Name** CXCR7

**Gene Alias** CMKOR1, GPR159, RDC1

**Gene Description** chemokine (C-X-C motif) receptor 7

**Omim ID** [610376](#)

**Gene Ontology** [Hyperlink](#)

**Gene Summary** This gene encodes a member of the G-protein coupled receptor family. Although this protein was earlier thought to be a receptor for vasoactive intestinal peptide (VIP), it is now considered to be an orphan receptor, in that its endogenous ligand has not been identified. The protein is also a co receptor for human immunodeficiency viruses (HIV). Translocations involving this gene and HMG A2 on chromosome 12 have been observed in lipomas. [provided by RefSeq]

**Other Designations** G protein-coupled receptor|chemokine orphan receptor 1

## Disease

- [HIV Infections](#)