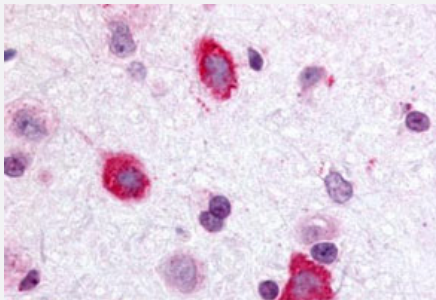


GALR3 polyclonal antibody

Catalog # PAB26185

Size 50 ug

Applications



Immunohistochemistry (Formalin/PFA-fixed paraffin-embedded sections)

Immunohistochemistry (Formalin/PFA-fixed paraffin-embedded sections) of rat brain, hippocampus with GALR3 polyclonal antibody (Cat # PAB26185).
Immunohistochemistry of formalin-fixed, paraffin-embedded tissue after heat-induced antigen retrieval.

Specification

Product Description	Rabbit polyclonal antibody raised against synthetic peptide of GALR3.
Immunogen	A synthetic peptide corresponding to 17 amino acid at cytoplasmic domain of human GALR3.
Host	Rabbit
Reactivity	Human, Rat
Specificity	BLAST analysis of the peptide immunogen showed no homology with other human proteins.
Form	Liquid
Purification	Immunoaffinity chromatography
Recommend Usage	Immunohistochemistry (Formalin/PFA-fixed paraffin-embedded sections) (3-7 ug/mL) The optimal working dilution should be determined by the end user.
Storage Buffer	In PBS (0.09% sodium azide)
Storage Instruction	Store at 4°C. For long term storage store at -80°C. Aliquot to avoid repeated freezing and thawing.

Note

This product contains sodium azide: a POISONOUS AND HAZARDOUS SUBSTANCE which should be handled by trained staff only.

Applications

- Immunohistochemistry (Formalin/PFA-fixed paraffin-embedded sections)

Immunohistochemistry (Formalin/PFA-fixed paraffin-embedded sections) of rat brain, hippocampus with GALR3 polyclonal antibody (Cat # PAB26185). Immunohistochemistry of formalin-fixed, paraffin-embedded tissue after heat-induced antigen retrieval.

Gene Info — GALR3

Entrez GeneID [8484](#)

Protein Accession# [O60755](#)

Gene Name GALR3

Gene Alias -

Gene Description galanin receptor 3

Omim ID [603692](#)

Gene Ontology [Hyperlink](#)

Gene Summary The neuropeptide galanin modulates a variety of physiologic processes including cognition/memory, sensory/pain processing, hormone secretion, and feeding behavior. The human galanin receptors are G protein-coupled receptors that functionally couple to their intracellular effector through distinct signaling pathways. GALR3 is found in many tissues and may be expressed as 1.4-, 2.4-, and 5-kb transcripts [provided by RefSeq]

Other Designations OTTHUMP00000028820|galanin receptor, family member 3

Pathway

- [Neuroactive ligand-receptor interaction](#)

Disease

- [Alcoholism](#)

- [Genetic Predisposition to Disease](#)
- [Mental Disorders](#)
- [Narcolepsy](#)