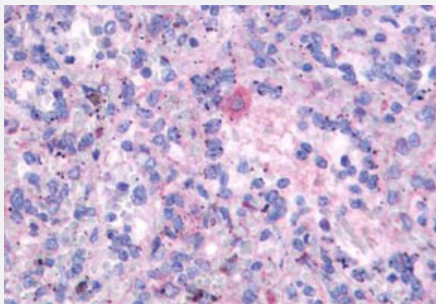


# FPR3 polyclonal antibody

Catalog # PAB26178

Size 50 ug

## Applications



### Immunohistochemistry (Formalin/PFA-fixed paraffin-embedded sections)

Immunohistochemistry (Formalin/PFA-fixed paraffin-embedded sections) of human spleen tissue with FPR3 polyclonal antibody (Cat # PAB26178). Immunohistochemistry of formalin-fixed, paraffin-embedded tissue after heat-induced antigen retrieval.

## Specification

<b>Product Description</b>	Rabbit polyclonal antibody raised against synthetic peptide of FPR3.
<b>Immunogen</b>	A synthetic peptide corresponding to 18 amino acid at N-terminus of human FPR3.
<b>Host</b>	Rabbit
<b>Reactivity</b>	Human, Monkey
<b>Specificity</b>	BLAST analysis of the peptide immunogen showed no homology with other human proteins.
<b>Form</b>	Liquid
<b>Purification</b>	Immunoaffinity chromatography
<b>Recommend Usage</b>	Immunohistochemistry (Formalin/PFA-fixed paraffin-embedded sections) (3 ug/mL) The optimal working dilution should be determined by the end user.
<b>Storage Buffer</b>	In PBS (0.09% sodium azide)
<b>Storage Instruction</b>	Store at 4°C. For long term storage store at -80°C. Aliquot to avoid repeated freezing and thawing.

**Note**

This product contains sodium azide: a POISONOUS AND HAZARDOUS SUBSTANCE which should be handled by trained staff only.

## Applications

- Immunohistochemistry (Formalin/PFA-fixed paraffin-embedded sections)

Immunohistochemistry (Formalin/PFA-fixed paraffin-embedded sections) of human spleen tissue with FPR3 polyclonal antibody (Cat # PAB26178). Immunohistochemistry of formalin-fixed, paraffin-embedded tissue after heat-induced antigen retrieval.

- Immunocytochemistry

## Gene Info — FPR3

Entrez GeneID	<a href="#">2359</a>
Protein Accession#	<a href="#">P25089</a>
Gene Name	FPR3
Gene Alias	FML2_HUMAN, FMLPY, FPRH1, FPRH2, FPRL2, RMLP-R-I
Gene Description	formyl peptide receptor 3
Omim ID	<a href="#">136539</a>
Gene Ontology	<a href="#">Hyperlink</a>
Other Designations	FMLP-related receptor II formyl peptide receptor-like 2

## Pathway

- [Neuroactive ligand-receptor interaction](#)