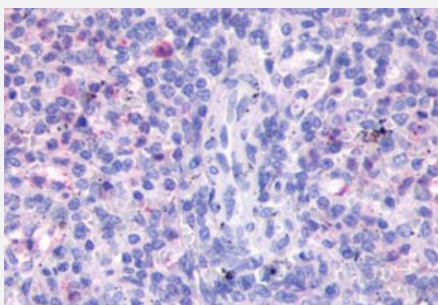


FPR3 polyclonal antibody

Catalog # PAB26177

Size 50 ug

Applications



Immunohistochemistry (Formalin/PFA-fixed paraffin-embedded sections)

Immunohistochemistry (Formalin/PFA-fixed paraffin-embedded sections) of human spleen tissue with FPR3 polyclonal antibody (Cat # PAB26177). Immunohistochemistry of formalin-fixed, paraffin-embedded tissue after heat-induced antigen retrieval.

Specification

Product Description	Rabbit polyclonal antibody raised against synthetic peptide of FPR3.
Immunogen	A synthetic peptide corresponding to 18 amino acid at transmembrane domain of human FPR3.
Host	Rabbit
Reactivity	Human, Monkey
Specificity	BLAST analysis of the peptide immunogen showed no homology with other human proteins, except FPR2 (61%).
Form	Liquid
Purification	Immunoaffinity chromatography
Recommend Usage	Immunohistochemistry (Formalin/PFA-fixed paraffin-embedded sections) (8 ug/mL) The optimal working dilution should be determined by the end user.
Storage Buffer	In PBS (0.09% sodium azide)
Storage Instruction	Store at 4°C. For long term storage store at -80°C. Aliquot to avoid repeated freezing and thawing.

Note

This product contains sodium azide: a POISONOUS AND HAZARDOUS SUBSTANCE which should be handled by trained staff only.

Applications

- Immunohistochemistry (Formalin/PFA-fixed paraffin-embedded sections)

Immunohistochemistry (Formalin/PFA-fixed paraffin-embedded sections) of human spleen tissue with FPR3 polyclonal antibody (Cat # PAB26177). Immunohistochemistry of formalin-fixed, paraffin-embedded tissue after heat-induced antigen retrieval.

Gene Info — FPR3

Entrez GeneID [2359](#)

Protein Accession# [P25089](#)

Gene Name FPR3

Gene Alias FML2_HUMAN, FMLPY, FPRH1, FPRH2, FPRL2, RMLP-R-I

Gene Description formyl peptide receptor 3

Omim ID [136539](#)

Gene Ontology [Hyperlink](#)

Other Designations FMLP-related receptor II|formyl peptide receptor-like 2

Pathway

- [Neuroactive ligand-receptor interaction](#)