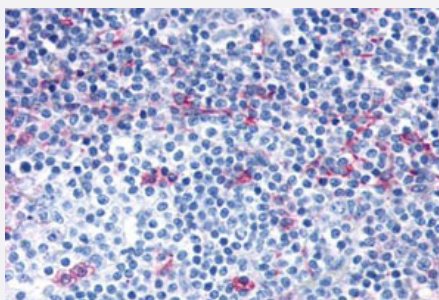


CCR7 polyclonal antibody

Catalog # PAB26170

Size 50 ug

Applications



Immunohistochemistry (Formalin/PFA-fixed paraffin-embedded sections)

Immunohistochemical staining of human lymph node with CCR7 polyclonal antibody (Cat # PAB26170).

Immunohistochemistry of formalin-fixed, paraffin-embedded tissue after heat-induced antigen retrieval.

Specification

Product Description	Rabbit polyclonal antibody raised against synthetic peptide of CCR7.
Immunogen	A synthetic peptide corresponding to 19 amino acids at C-terminus of human CCR7.
Host	Rabbit
Reactivity	Bovine, Human, Monkey
Specificity	BLAST analysis of the peptide immunogen showed no homology with other human proteins.
Form	Liquid
Purification	Immunoaffinity chromatography
Recommend Usage	Immunohistochemistry (Formalin/PFA-fixed paraffin-embedded sections) (6-8 ug/mL) The optimal working dilution should be determined by the end user.
Storage Buffer	In PBS (0.09% sodium azide)
Storage Instruction	Store at 4°C. For long term storage store at -80°C. Aliquot to avoid repeated freezing and thawing.

Note

This product contains sodium azide: a POISONOUS AND HAZARDOUS SUBSTANCE which should be handled by trained staff only.

Applications

- Immunohistochemistry (Formalin/PFA-fixed paraffin-embedded sections)

Immunohistochemical staining of human lymph node with CCR7 polyclonal antibody (Cat # PAB26170).

Immunohistochemistry of formalin-fixed, paraffin-embedded tissue after heat-induced antigen retrieval.

Gene Info — CCR7

Entrez GeneID [1236](#)

Protein Accession# [P32248](#)

Gene Name CCR7

Gene Alias BLR2, CD197, CDw197, CMKBR7, EB11

Gene Description chemokine (C-C motif) receptor 7

Omim ID [600242](#)

Gene Ontology [Hyperlink](#)

Gene Summary The protein encoded by this gene is a member of the G protein-coupled receptor family. This receptor was identified as a gene induced by the Epstein-Barr virus (EBV), and is thought to be a mediator of EBV effects on B lymphocytes. This receptor is expressed in various lymphoid tissues and activates B and T lymphocytes. It has been shown to control the migration of memory T cells to inflamed tissues, as well as stimulate dendritic cell maturation. The chemokine (C-C motif) ligand 19 (CCL19/ECL) has been reported to be a specific ligand of this receptor. [provided by RefSeq]

Other Designations C-C chemokine receptor type 7|CC chemokine receptor 7|EBV-induced G protein-coupled receptor 1|Epstein-Barr virus induced G-protein coupled receptor|Epstein-Barr virus induced gene 1|MI P-3 beta receptor|chemokine (C-C) receptor 7|lymphocyte-specific G pro

Pathway

- [Chemokine signaling pathway](#)
- [Cytokine-cytokine receptor interaction](#)

Disease

- [Birth Weight](#)
- [Breast cancer](#)
- [Breast Neoplasms](#)
- [Genetic Predisposition to Disease](#)
- [Glioblastoma](#)
- [Glioma](#)
- [HIV Infections](#)
- [Leukemia](#)
- [Lupus Erythematosus](#)
- [Meningeal Neoplasms](#)
- [Meningioma](#)
- [Scleroderma](#)