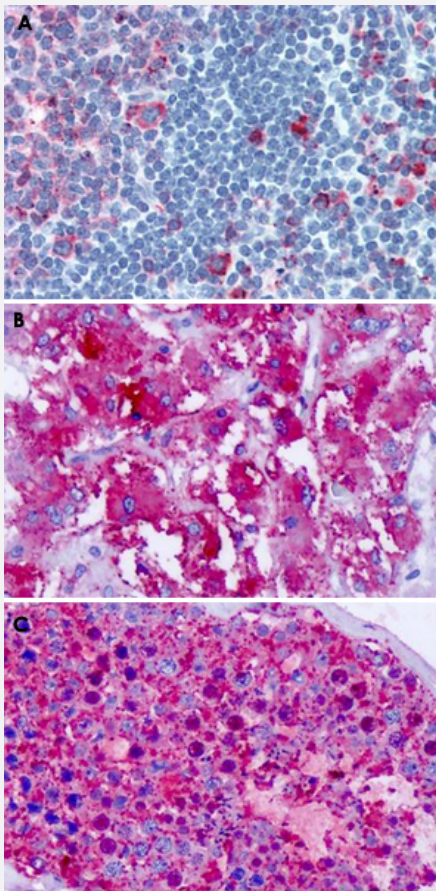


CELSR1 polyclonal antibody

Catalog # PAB26150

Size 50 ug

Applications



Immunohistochemistry (Formalin/PFA-fixed paraffin-embedded sections)

Immunohistochemical staining of formalin-fixed paraffin-embedded human tonsil (A), adrenal gland (B) and testis (C) with CELSR1 polyclonal antibody (Cat # PAB26150).

Specification

Product Description	Rabbit polyclonal antibody raised against synthetic peptide of CELSR1.
Immunogen	A synthetic peptide corresponding to 19 amino acids at C-terminus of human CELSR1.
Host	Rabbit
Reactivity	Human

Specificity	BLAST analysis of the peptide immunogen showed no homology with other human proteins.
Form	Liquid
Purification	Immunoaffinity chromatography
Recommend Usage	Immunohistochemistry (Formalin/PFA-fixed paraffin-embedded sections) (16-32 ug/mL) The optimal working dilution should be determined by the end user.
Storage Buffer	In PBS (0.09% sodium azide)
Storage Instruction	Store at 4°C. For long term storage store at -80°C. Aliquot to avoid repeated freezing and thawing.
Note	This product contains sodium azide: a POISONOUS AND HAZARDOUS SUBSTANCE which should be handled by trained staff only.

Applications

- Immunohistochemistry (Formalin/PFA-fixed paraffin-embedded sections)

Immunohistochemical staining of formalin-fixed paraffin-embedded human tonsil (A), adrenal gland (B) and testis (C) with CELSR1 polyclonal antibody (Cat # PAB26150).

- Enzyme-linked Immunoabsorbent Assay

Gene Info — CELSR1

Entrez GeneID	9620
Protein Accession#	Q9NYQ6
Gene Name	CELSR1
Gene Alias	CDHF9, DKFZp434P0729, FMI2, HFM12, ME2
Gene Description	cadherin, EGF LAG seven-pass G-type receptor 1 (flamingo homolog, Drosophila)
Omim ID	604523
Gene Ontology	Hyperlink

Gene Summary

The protein encoded by this gene is a member of the flamingo subfamily, part of the cadherin superfamily. The flamingo subfamily consists of nonclassic-type cadherins; a subpopulation that does not interact with catenins. The flamingo cadherins are located at the plasma membrane and have nine cadherin domains, seven epidermal growth factor-like repeats and two laminin A G-type repeats in their ectodomain. They also have seven transmembrane domains, a characteristic unique to this subfamily. It is postulated that these proteins are receptors involved in contact-mediated communication, with cadherin domains acting as homophilic binding regions and the EGF-like domains involved in cell adhesion and receptor-ligand interactions. This particular member is a developmentally regulated, neural-specific gene which plays an unspecified role in early embryogenesis. [provided by RefSeq]

Other Designations

OTTHUMP00000028852|cadherin EGF LAG seven-pass G-type receptor 1|protocadherin flamingo 2

Disease

- [Atherosclerosis](#)
- [Brain Ischemia](#)
- [Cerebral Hemorrhage](#)
- [Genetic Predisposition to Disease](#)
- [Hypertension](#)
- [Intracranial Hemorrhages](#)
- [Schizophrenia](#)
- [Stroke](#)
- [Subarachnoid Hemorrhage](#)
- [Tobacco Use Disorder](#)