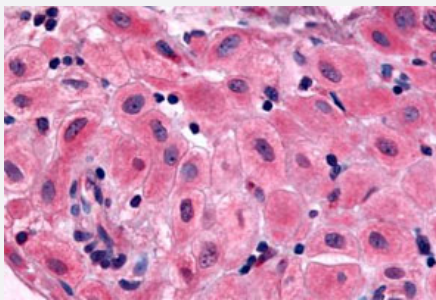


# BRS3 polyclonal antibody

Catalog # PAB26146

Size 50 ug

## Applications



### Immunohistochemistry (Formalin/PFA-fixed paraffin-embedded sections)

Immunohistochemical staining of human uterus, pregnant with BRS3 polyclonal antibody (Cat # PAB26146).

Immunohistochemistry of formalin-fixed, paraffin-embedded tissue after heat-induced antigen retrieval.

## Specification

<b>Product Description</b>	Rabbit polyclonal antibody raised against synthetic peptide of BRS3.
<b>Immunogen</b>	A synthetic peptide corresponding to 15 amino acids at extracellular domain of human BRS3.
<b>Host</b>	Rabbit
<b>Reactivity</b>	Human, Monkey
<b>Specificity</b>	BLAST analysis of the peptide immunogen showed no homology with other human proteins.
<b>Form</b>	Liquid
<b>Purification</b>	Immunoaffinity chromatography
<b>Recommend Usage</b>	Immunohistochemistry (Formalin/PFA-fixed paraffin-embedded sections) (2.5 ug/mL) The optimal working dilution should be determined by the end user.
<b>Storage Buffer</b>	In PBS (0.09% sodium azide)
<b>Storage Instruction</b>	Store at 4°C. For long term storage store at -80°C. Aliquot to avoid repeated freezing and thawing.

## Note

This product contains sodium azide: a POISONOUS AND HAZARDOUS SUBSTANCE which should be handled by trained staff only.

## Applications

- Immunohistochemistry (Formalin/PFA-fixed paraffin-embedded sections)

Immunohistochemical staining of human uterus, pregnant with BRS3 polyclonal antibody (Cat # PAB26146).

Immunohistochemistry of formalin-fixed, paraffin-embedded tissue after heat-induced antigen retrieval.

## Gene Info — BRS3

Entrez GeneID [680](#)

Protein Accession# [P32247](#)

Gene Name BRS3

Gene Alias -

Gene Description bombesin-like receptor 3

Omim ID [300107](#)

Gene Ontology [Hyperlink](#)

**Gene Summary** Mammalian bombesin-like peptides (see MIM 137260) are widely distributed in the central nervous system as well as in the gastrointestinal tract, where they modulate smooth-muscle contraction, exocrine and endocrine processes, metabolism, and behavior. They bind to G protein-coupled receptors on the cell surface to elicit their effects. Bombesin-like peptide receptors include gastrin-releasing peptide receptor (MIM 305670), neuromedin B receptor (MIM 162341), and bombesin-like receptor-3 (BRS3) (Ohki-Hamazaki et al., 1997).[supplied by OMIM]

**Other Designations** G-protein coupled receptor|OTTHUMP00000024342|bombesin receptor subtype 3

## Pathway

- [Neuroactive ligand-receptor interaction](#)

## Disease

- [Cardiovascular Diseases](#)

- [Diabetes Mellitus](#)
- [Edema](#)