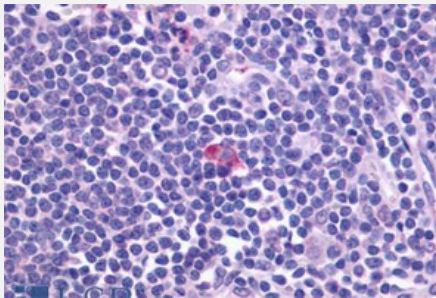


CXCR5 polyclonal antibody

Catalog # PAB26093

Size 50 ug

Applications



Immunohistochemistry (Formalin/PFA-fixed paraffin-embedded sections)

Immunohistochemical staining of human spleen with CXCR5 polyclonal antibody (Cat # PAB26093).

Immunohistochemistry of formalin-fixed, paraffin-embedded tissue after heat-induced antigen retrieval.

Specification

Product Description	Rabbit polyclonal antibody raised against synthetic peptide of CXCR5.
Immunogen	A synthetic peptide corresponding to 16 amino acids at cytoplasmic domain of human CXCR5.
Host	Rabbit
Reactivity	Human, Monkey
Specificity	BLAST analysis of the peptide immunogen showed no homology with other human proteins, except MTA3 (50%).
Form	Liquid
Purification	Immunoaffinity chromatography
Recommend Usage	Immunohistochemistry (Formalin/PFA-fixed paraffin-embedded sections) (5-18 ug/mL) The optimal working dilution should be determined by the end user.
Storage Buffer	In PBS (0.09% sodium azide)
Storage Instruction	Store at 4°C. For long term storage store at -80°C. Aliquot to avoid repeated freezing and thawing.

Note

This product contains sodium azide: a POISONOUS AND HAZARDOUS SUBSTANCE which should be handled by trained staff only.

Applications

- Immunohistochemistry (Formalin/PFA-fixed paraffin-embedded sections)

Immunohistochemical staining of human spleen with CXCR5 polyclonal antibody (Cat # PAB26093).

Immunohistochemistry of formalin-fixed, paraffin-embedded tissue after heat-induced antigen retrieval.

Gene Info — CXCR5

Entrez GeneID [643](#)

Protein Accession# [P32302](#)

Gene Name CXCR5

Gene Alias BLR1, CD185, MDR15, MGC117347

Gene Description chemokine (C-X-C motif) receptor 5

Omim ID [601613](#)

Gene Ontology [Hyperlink](#)

Gene Summary This gene was identified as a gene specifically expressed in Burkitt's lymphoma and lymphatic tissues. The protein encoded by this gene is predicted to be a seven transmembrane G protein-coupled receptor and belongs to the CXC chemokine receptor family. BLC, a B-lymphocyte chemoattractant, was identified to be a specific ligand for this receptor. Studies of this gene and its mouse counterpart strongly suggest the essential function of this gene in B cell migration and localization within specific anatomic compartments, such as follicles in lymph nodes as well as in spleen. Two alternatively spliced variants of this gene exist. [provided by RefSeq]

Other Designations Burkitt lymphoma receptor 1|Burkitt lymphoma receptor 1, GTP binding protein (chemokine (C-X-C motif) receptor 5)|Burkitt lymphoma receptor 1, GTP-binding protein|C-X-C chemokine receptor type 5|monocyte-derived receptor 15

Pathway

- [Chemokine signaling pathway](#)
- [Cytokine-cytokine receptor interaction](#)

Disease

- [Cardiovascular Diseases](#)
- [Diabetes Mellitus](#)
- [Edema](#)
- [Genetic Predisposition to Disease](#)