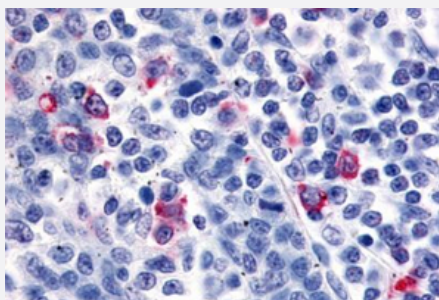


CXCR6 polyclonal antibody

Catalog # PAB26076

Size 50 ug

Applications



Immunohistochemistry (Formalin/PFA-fixed paraffin-embedded sections)

Immunohistochemical staining of human tonsil, interfollicular zone with CXCR6 polyclonal antibody (Cat # PAB26076).

Immunohistochemistry of formalin-fixed, paraffin-embedded tissue after heat-induced antigen retrieval.

Specification

Product Description	Rabbit polyclonal antibody raised against synthetic peptide of CXCR6.
Immunogen	A synthetic peptide corresponding to 16 amino acids at cytoplasmic domain of human CXCR6.
Host	Rabbit
Reactivity	Human, Monkey
Specificity	BLAST analysis of the peptide immunogen showed no homology with other human proteins.
Form	Liquid
Purification	Immunoaffinity chromatography
Recommend Usage	Immunohistochemistry (Formalin/PFA-fixed paraffin-embedded sections) (6.8 ug/mL) The optimal working dilution should be determined by the end user.
Storage Buffer	In PBS (0.09% sodium azide)
Storage Instruction	Store at 4°C. For long term storage store at -80°C. Aliquot to avoid repeated freezing and thawing.

Note

This product contains sodium azide: a POISONOUS AND HAZARDOUS SUBSTANCE which should be handled by trained staff only.

Applications

- Immunohistochemistry (Formalin/PFA-fixed paraffin-embedded sections)

Immunohistochemical staining of human tonsil, interfollicular zone with CXCR6 polyclonal antibody (Cat # PAB26076).

Immunohistochemistry of formalin-fixed, paraffin-embedded tissue after heat-induced antigen retrieval.

Gene Info — CXCR6

Entrez GeneID [10663](#)

Protein Accession# [O00574](#)

Gene Name CXCR6

Gene Alias BONZO, CD186, STRL33, TYMSTR

Gene Description chemokine (C-X-C motif) receptor 6

Omim ID [605163](#)

Gene Ontology [Hyperlink](#)

Other Designations G protein-coupled receptor|G protein-coupled receptor TYMSTR|OTTHUMP00000164651

Pathway

- [Chemokine signaling pathway](#)
- [Cytokine-cytokine receptor interaction](#)

Disease

- [Acquired Immunodeficiency Syndrome](#)
- [Genetic Predisposition to Disease](#)
- [HIV Infections](#)

- [Ovarian Neoplasms](#)
- [Pneumonia](#)