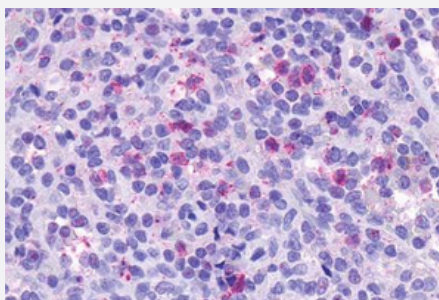


CCRL2 polyclonal antibody

Catalog # PAB26074

Size 50 ug

Applications



Immunohistochemistry (Formalin/PFA-fixed paraffin-embedded sections)

Immunohistochemical staining of human spleen with CCRL2 polyclonal antibody (Cat # PAB26074).

Immunohistochemistry of formalin-fixed, paraffin-embedded tissue after heat-induced antigen retrieval.

Specification

Product Description	Rabbit polyclonal antibody raised against synthetic peptide of CCRL2.
Immunogen	A synthetic peptide corresponding to 20 amino acids at cytoplasmic domain of human CCRL2.
Host	Rabbit
Reactivity	Human
Specificity	BLAST analysis of the peptide immunogen showed no homology with other human proteins.
Form	Liquid
Purification	Immunoaffinity chromatography
Recommend Usage	Immunohistochemistry (Formalin/PFA-fixed paraffin-embedded sections) (11 ug/mL) The optimal working dilution should be determined by the end user.
Storage Buffer	In PBS (0.09% sodium azide)
Storage Instruction	Store at 4°C. For long term storage store at -80°C. Aliquot to avoid repeated freezing and thawing.

Note

This product contains sodium azide: a POISONOUS AND HAZARDOUS SUBSTANCE which should be handled by trained staff only.

Applications

- Immunohistochemistry (Formalin/PFA-fixed paraffin-embedded sections)

Immunohistochemical staining of human spleen with CCRL2 polyclonal antibody (Cat # PAB26074).

Immunohistochemistry of formalin-fixed, paraffin-embedded tissue after heat-induced antigen retrieval.

Gene Info — CCRL2

Entrez GeneID [9034](#)

Protein Accession# [O00421](#)

Gene Name CCRL2

Gene Alias CKRX, CRAM-A, CRAM-B, FLJ55815, HCR, MGC116710

Gene Description chemokine (C-C motif) receptor-like 2

Omim ID [608379](#)

Gene Ontology [Hyperlink](#)

Gene Summary This gene encodes a chemokine receptor like protein, which is predicted to be a seven transmembrane protein and most closely related to CCR1. Chemokines and their receptors mediated signal transduction are critical for the recruitment of effector immune cells to the site of inflammation. This gene is expressed at high levels in primary neutrophils and primary monocytes, and is further upregulated on neutrophil activation and during monocyte to macrophage differentiation. The function of this gene is unknown. This gene is mapped to the region where the chemokine receptor gene cluster is located. [provided by RefSeq]

Other Designations chemokine receptor

Disease

- [Cardiovascular Diseases](#)
- [Genetic Predisposition to Disease](#)
- [HIV Infections](#)
- [Narcolepsy](#)