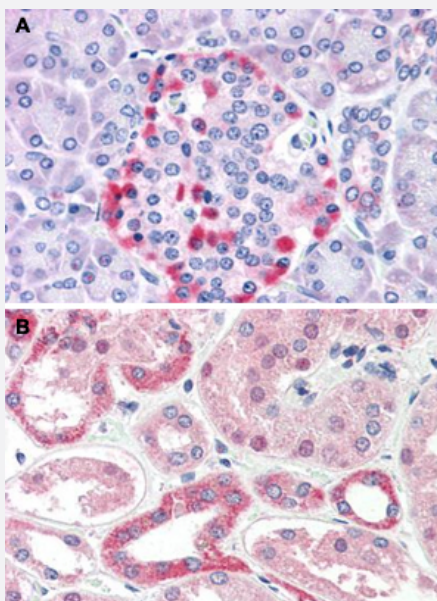


# CADM4 polyclonal antibody

Catalog # PAB26067

Size 50 ug

## Applications



### Immunohistochemistry (Formalin/PFA-fixed paraffin-embedded sections)

Immunohistochemical staining of human pancreas (A) and human kidney (B) with CADM4 polyclonal antibody (Cat # PAB26067).

Immunohistochemistry of formalin-fixed, paraffin-embedded tissue after heat-induced antigen retrieval.

## Specification

<b>Product Description</b>	Rabbit polyclonal antibody raised against synthetic peptide of CADM4.
<b>Immunogen</b>	A synthetic peptide corresponding to 14 amino acids at internal region of human CADM4.
<b>Host</b>	Rabbit
<b>Reactivity</b>	Bovine, Dog, Horse, Human, Monkey, Mouse, Pig, Rabbit, Rat
<b>Specificity</b>	BLAST analysis of the peptide immunogen showed no homology with other human proteins.
<b>Form</b>	Liquid
<b>Purification</b>	Immunoaffinity chromatography
<b>Recommend Usage</b>	Immunohistochemistry (Formalin/PFA-fixed paraffin-embedded sections) (10-15 ug/mL) The optimal working dilution should be determined by the end user.

Storage Buffer	In PBS (0.09% sodium azide)
Storage Instruction	Store at 4°C. For long term storage store at -80°C. Aliquot to avoid repeated freezing and thawing.
Note	This product contains sodium azide: a POISONOUS AND HAZARDOUS SUBSTANCE which should be handled by trained staff only.

## Applications

- Immunohistochemistry (Formalin/PFA-fixed paraffin-embedded sections)

Immunohistochemical staining of human pancreas (A) and human kidney (B) with CADM4 polyclonal antibody (Cat # PAB26067).

Immunohistochemistry of formalin-fixed, paraffin-embedded tissue after heat-induced antigen retrieval.

## Gene Info — CADM4

Entrez GeneID	<a href="#">199731</a>
Protein Accession#	<a href="#">Q8NFZ8</a>
Gene Name	CADM4
Gene Alias	IGSF4C, NECL4, Necl-4, TSLL2, synCAM4
Gene Description	cell adhesion molecule 4
Omim ID	<a href="#">609744</a>
Gene Ontology	<a href="#">Hyperlink</a>
Gene Summary	member 4C nectin-like 4
Other Designations	TSLC1-like 2 immunoglobulin superfamily, member 4C nectin-like 4

## Disease

- [Osteoporosis](#)