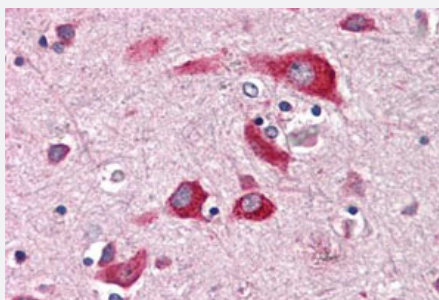


# ENTPD2 polyclonal antibody

Catalog # PAB26062

Size 50 ug

## Applications



### Immunohistochemistry (Formalin/PFA-fixed paraffin-embedded sections)

Immunohistochemical staining of human brain, cortex with ENTPD2 polyclonal antibody (Cat # PAB26062).

Immunohistochemistry of formalin-fixed, paraffin-embedded tissue after heat-induced antigen retrieval.

## Specification

<b>Product Description</b>	Rabbit polyclonal antibody raised against synthetic peptide of ENTPD2.
<b>Immunogen</b>	A synthetic peptide corresponding to 18 amino acids at internal region of human ENTPD2.
<b>Host</b>	Rabbit
<b>Reactivity</b>	Human
<b>Specificity</b>	BLAST analysis of the peptide immunogen showed no homology with other human proteins.
<b>Form</b>	Liquid
<b>Purification</b>	Immunoaffinity chromatography
<b>Recommend Usage</b>	Immunohistochemistry (Formalin/PFA-fixed paraffin-embedded sections) (2.5 ug/mL) The optimal working dilution should be determined by the end user.
<b>Storage Buffer</b>	In PBS (0.09% sodium azide)
<b>Storage Instruction</b>	Store at 4°C. For long term storage store at -80°C. Aliquot to avoid repeated freezing and thawing.

**Note**

This product contains sodium azide: a POISONOUS AND HAZARDOUS SUBSTANCE which should be handled by trained staff only.

## Applications

- Immunohistochemistry (Formalin/PFA-fixed paraffin-embedded sections)

Immunohistochemical staining of human brain, cortex with ENTPD2 polyclonal antibody (Cat # PAB26062).

Immunohistochemistry of formalin-fixed, paraffin-embedded tissue after heat-induced antigen retrieval.

## Gene Info — ENTPD2

**Entrez GeneID** [954](#)

**Protein Accession#** [Q9Y5L3](#)

**Gene Name** ENTPD2

**Gene Alias** CD39L1, NTPDase-2

**Gene Description** ectonucleoside triphosphate diphosphohydrolase 2

**Omim ID** [602012](#)

**Gene Ontology** [Hyperlink](#)

**Gene Summary** The protein encoded by this gene is the type 2 enzyme of the ecto-nucleoside triphosphate diphosphohydrolase family (E-NTPDase). E-NTPDases are a family of ecto-nucleosidases that hydrolyze 5'-triphosphates. This ecto-ATPase is an integral membrane protein. Alternative splicing of this gene results in multiple transcript variants. [provided by RefSeq]

**Other Designations** CD39-like-1|OTTHUMP00000022628|OTTHUMP00000022629|ecto-ATPase

## Pathway

- [Purine metabolism](#)