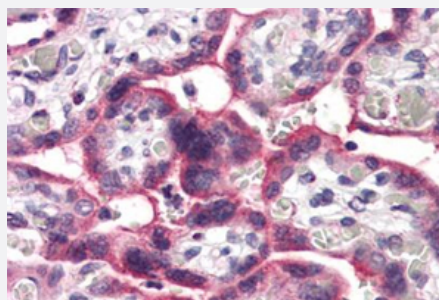


SLC5A6 polyclonal antibody

Catalog # PAB26060

Size 50 ug

Applications



Immunohistochemistry (Formalin/PFA-fixed paraffin-embedded sections)

Immunohistochemical staining of human placenta with SLC5A6 polyclonal antibody (Cat # PAB26060).

Immunohistochemistry of formalin-fixed, paraffin-embedded tissue after heat-induced antigen retrieval.

Specification

Product Description	Rabbit polyclonal antibody raised against synthetic peptide of SLC5A6.
Immunogen	A synthetic peptide corresponding to 15 amino acids at internal region of human SLC5A6.
Host	Rabbit
Reactivity	Bovine, Dog, Horse, Human, Rabbit
Specificity	BLAST analysis of the peptide immunogen showed no homology with other human proteins.
Form	Liquid
Purification	Immunoaffinity chromatography
Recommend Usage	Immunohistochemistry (Formalin/PFA-fixed paraffin-embedded sections) (10 ug/mL) The optimal working dilution should be determined by the end user.
Storage Buffer	In PBS (0.09% sodium azide)
Storage Instruction	Store at 4°C. For long term storage store at -80°C. Aliquot to avoid repeated freezing and thawing.

Note

This product contains sodium azide: a POISONOUS AND HAZARDOUS SUBSTANCE which should be handled by trained staff only.

Applications

- Immunohistochemistry (Formalin/PFA-fixed paraffin-embedded sections)

Immunohistochemical staining of human placenta with SLC5A6 polyclonal antibody (Cat # PAB26060).

Immunohistochemistry of formalin-fixed, paraffin-embedded tissue after heat-induced antigen retrieval.

Gene Info — SLC5A6

Entrez GeneID [8884](#)

Protein Accession# [Q9Y289](#)

Gene Name SLC5A6

Gene Alias SMVT

Gene Description solute carrier family 5 (sodium-dependent vitamin transporter), member 6

Omim ID [604024](#)

Gene Ontology [Hyperlink](#)

Gene Summary O

Other Designations sodium-dependent multivitamin transporter

Disease

- [Hearing Loss](#)
- [Kidney Failure](#)