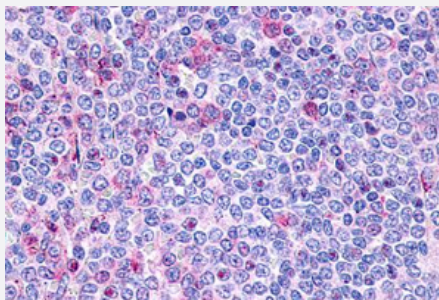


P2RY10 polyclonal antibody

Catalog # PAB26045

Size 50 ug

Applications



Immunohistochemistry (Formalin/PFA-fixed paraffin-embedded sections)

Immunohistochemical staining of human spleen, lymphocytes with P2RY10 polyclonal antibody (Cat # PAB26045).

Immunohistochemistry of formalin-fixed, paraffin-embedded tissue after heat-induced antigen retrieval.

Specification

Product Description	Rabbit polyclonal antibody raised against synthetic peptide of P2RY10.
Immunogen	A synthetic peptide corresponding to 16 amino acids at extracellular domain of human P2RY10.
Host	Rabbit
Reactivity	Human, Monkey
Specificity	BLAST analysis of the peptide immunogen showed no homology with other human proteins.
Form	Liquid
Purification	Immunoaffinity chromatography
Recommend Usage	Immunohistochemistry (Formalin/PFA-fixed paraffin-embedded sections) (3 ug/mL) The optimal working dilution should be determined by the end user.
Storage Buffer	In PBS (0.09% sodium azide)
Storage Instruction	Store at 4°C. For long term storage store at -80°C. Aliquot to avoid repeated freezing and thawing.

Note

This product contains sodium azide: a POISONOUS AND HAZARDOUS SUBSTANCE which should be handled by trained staff only.

Applications

- Immunohistochemistry (Formalin/PFA-fixed paraffin-embedded sections)

Immunohistochemical staining of human spleen, lymphocytes with P2RY10 polyclonal antibody (Cat # PAB26045).

Immunohistochemistry of formalin-fixed, paraffin-embedded tissue after heat-induced antigen retrieval.

Gene Info — P2RY10

Entrez GeneID [27334](#)

Protein Accession# [O00398](#)

Gene Name P2RY10

Gene Alias P2Y10

Gene Description purinergic receptor P2Y, G-protein coupled, 10

Omim ID [300529](#)

Gene Ontology [Hyperlink](#)

Gene Summary The protein encoded by this gene belongs to the family of G-protein coupled receptors, that are preferentially activated by adenosine and uridine nucleotides. Two alternatively spliced transcript variants encoding the same protein isoform have been found for this gene. [provided by RefSeq]

Other Designations G-protein coupled purinergic receptor P2Y10|OTTHUMP00000023599|P2Y purinoceptor 10|P2Y-like receptor

Pathway

- [Neuroactive ligand-receptor interaction](#)