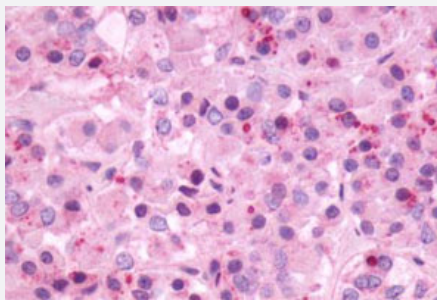


NMBR polyclonal antibody

Catalog # PAB26043

Size 50 ug

Applications



Immunohistochemistry (Formalin/PFA-fixed paraffin-embedded sections)

Immunohistochemical staining of human brain, pituitary with nMBR polyclonal antibody (Cat # PAB26043).

Immunohistochemistry of formalin-fixed, paraffin-embedded tissue after heat-induced antigen retrieval.

Specification

Product Description	Rabbit polyclonal antibody raised against synthetic peptide of NMBR.
Immunogen	A synthetic peptide corresponding to 19 amino acids at C-terminus of human NMBR.
Host	Rabbit
Reactivity	Human
Specificity	BLAST analysis of the peptide immunogen showed no homology with other human proteins.
Form	Liquid
Purification	Immunoaffinity chromatography
Recommend Usage	Immunohistochemistry (Formalin/PFA-fixed paraffin-embedded sections) (9 ug/mL) The optimal working dilution should be determined by the end user.
Storage Buffer	In PBS (0.09% sodium azide)
Storage Instruction	Store at 4°C. For long term storage store at -80°C. Aliquot to avoid repeated freezing and thawing.

Note

This product contains sodium azide: a POISONOUS AND HAZARDOUS SUBSTANCE which should be handled by trained staff only.

Applications

- Immunohistochemistry (Formalin/PFA-fixed paraffin-embedded sections)

Immunohistochemical staining of human brain, pituitary with nMBR polyclonal antibody (Cat # PAB26043).

Immunohistochemistry of formalin-fixed, paraffin-embedded tissue after heat-induced antigen retrieval.

Gene Info — NMBR

Entrez GeneID [4829](#)

Protein Accession# [P28336](#)

Gene Name NMBR

Gene Alias -

Gene Description neuromedin B receptor

Omim ID [162341](#)

Gene Ontology [Hyperlink](#)

Gene Summary Neuromedin B receptor binds neuromedin B, a potent mitogen and growth factor for normal and neoplastic lung and for gastrointestinal epithelial tissue. [provided by RefSeq]

Other Designations OTTHUMP00000017317

Pathway

- [Neuroactive ligand-receptor interaction](#)