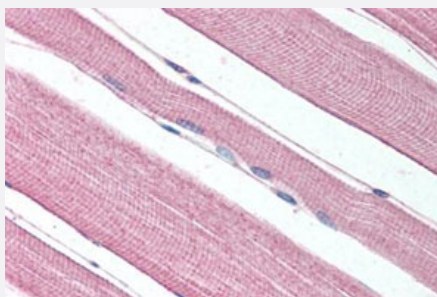


# PROKR1 polyclonal antibody

Catalog # PAB26032

Size 50 ug

## Applications



### Immunohistochemistry (Formalin/PFA-fixed paraffin-embedded sections)

Immunohistochemical staining of human skeletal muscle with PROKR1 polyclonal antibody (Cat # PAB26032).

Immunohistochemistry of formalin-fixed, paraffin-embedded tissue after heat-induced antigen retrieval.

## Specification

<b>Product Description</b>	Rabbit polyclonal antibody raised against synthetic peptide of PROKR1.
<b>Immunogen</b>	A synthetic peptide corresponding to 15 amino acids at N-terminus of human PROKR1.
<b>Host</b>	Rabbit
<b>Reactivity</b>	Human
<b>Specificity</b>	BLAST analysis of the peptide immunogen showed no homology with other human proteins.
<b>Form</b>	Liquid
<b>Purification</b>	Immunoaffinity chromatography
<b>Recommend Usage</b>	Immunohistochemistry (Formalin/PFA-fixed paraffin-embedded sections) (7-16 ug/mL) The optimal working dilution should be determined by the end user.
<b>Storage Buffer</b>	In PBS (0.09% sodium azide)
<b>Storage Instruction</b>	Store at 4°C. For long term storage store at -80°C. Aliquot to avoid repeated freezing and thawing.

**Note**

This product contains sodium azide: a POISONOUS AND HAZARDOUS SUBSTANCE which should be handled by trained staff only.

## Applications

- Western Blot
- Immunohistochemistry (Formalin/PFA-fixed paraffin-embedded sections)

Immunohistochemical staining of human skeletal muscle with PROKR1 polyclonal antibody (Cat # PAB26032).  
Immunohistochemistry of formalin-fixed, paraffin-embedded tissue after heat-induced antigen retrieval.

## Gene Info — PROKR1

**Entrez GeneID** [10887](#)

**Protein Accession#** [Q8TCW9](#)

**Gene Name** PROKR1

**Gene Alias** GPR73, GPR73a, PKR1, ZAQ

**Gene Description** prokineticin receptor 1

**Omim ID** [607122](#)

**Gene Ontology** [Hyperlink](#)

**Other Designations** G protein-coupled receptor 73|G protein-coupled receptor ZAQ|OTTHUMP00000159967