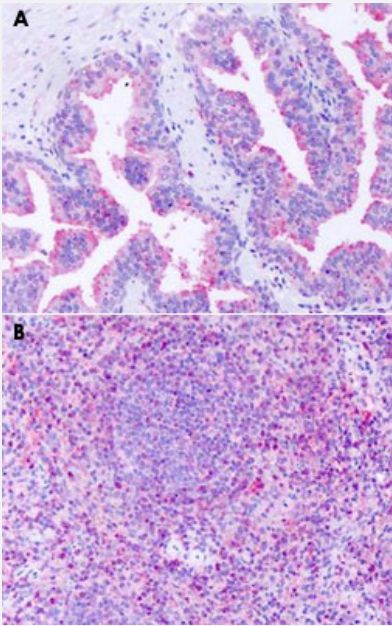


GPR63 polyclonal antibody

Catalog # PAB26030

Size 50 ug

Applications



Immunohistochemistry (Formalin/PFA-fixed paraffin-embedded sections)

Immunohistochemical staining of formalin-fixed paraffin-embedded human prostate (A) and human spleen (B) with GPR63 polyclonal antibody (Cat # PAB26030).

Specification

Product Description	Rabbit polyclonal antibody raised against synthetic peptide of GPR63.
Immunogen	A synthetic peptide corresponding to 15 amino acids at extracellular domain of human GPR63.
Host	Rabbit
Reactivity	Bovine, Hamster, Human, Mouse, Pig, Rat
Specificity	BLAST analysis of the peptide immunogen showed no homology with other human proteins.
Form	Liquid
Purification	Immunoaffinity chromatography

Recommend Usage	Immunohistochemistry (Formalin/PFA-fixed paraffin-embedded sections) (19 ug/mL) The optimal working dilution should be determined by the end user.
Storage Buffer	In PBS (0.09% sodium azide)
Storage Instruction	Store at 4°C. For long term storage store at -80°C. Aliquot to avoid repeated freezing and thawing.
Note	This product contains sodium azide: a POISONOUS AND HAZARDOUS SUBSTANCE which should be handled by trained staff only.

Applications

- Immunohistochemistry (Formalin/PFA-fixed paraffin-embedded sections)

Immunohistochemical staining of formalin-fixed paraffin-embedded human prostate (A) and human spleen (B) with GPR63 polyclonal antibody (Cat # PAB26030).

Gene Info — GPR63

Entrez GeneID	81491
Protein Accession#	Q9BZJ6
Gene Name	GPR63
Gene Alias	PSP24(beta), PSP24B
Gene Description	G protein-coupled receptor 63
Omim ID	606915
Gene Ontology	Hyperlink
Gene Summary	G protein-coupled receptors (GPCRs, or GPRs) contain 7 transmembrane domains and transduce extracellular signals through heterotrimeric G proteins.[supplied by OMIM]
Other Designations	OTTHUMP00000016881 brain expressed G-protein-coupled receptor PSP24 beta